

Full length ramps

Ramps lowered, with high pre-ramps for driving on and off to park one of the cars. I subsequently redesigned these to make them longer, so that with one car on I can back the other up until the tyres touch the edge of the ramps, then I know I have a few inches clearance between the cars, and couple of inches between the front of the front car and the closed garage doors.



'Blunt' end raised on the towers, with low-profile pre-ramps.



Bee driven on and parked at a jaunty angle.



'Sharp' end raised and swinging legs dropped into position. These are held in the raised or lowered position with locking pins, which are pulled out against spring pressure from the outer edges of the ramp. Being close to the wall makes the one that side tricky to lower especially with a car in-situ as you have to lift the leg slightly with one hand to take the pressure off the pin, while pulling the pin back with the other hand. So I have attached a cord to the bottom of the leg, fastened to a nail further up the wall, so I can lift the leg with that while pulling the pin back.



The only slight problem is that the end you drive on from ends up slightly lower than the other end, which given the arrangement of my garage and reversing the cars onto the ramps means the front of the car ends up slightly lower than the front. Not sure why, but it caused me problems the first time I needed to bleed clutch and brakes until I raised the front of the car by an additional amount. Additional plinths for the swinging legs are a possibility.

There are also two cross pieces that sit on top of the ramps under the axles, which can be used for jacking under an axle for wheel removal. However these are fixed width and shaped to slot between the ramps, so need to be shortened (with suitable welding and strengthening) for this spacing of the ramps.

THE NEVER ENDING SAGA OF THE BL---Y B

by Herb Adler 5243 3409

Two Post Hoist

Being sick of lying on my back, with the floor of the B about 2" from my nose and trying to work, I decided to purchase a 2 post car hoist. Well, I had to pick it up from Tullamarine (not the airport, but the suburb). Luckily I have a 1 tonne trailer, as the hoist weighs around 830kg.

To remove it from the trailer I used an engine crane, kindly loaned to me by Len Fox, after opening and freeing all parts of it, whilst still on the trailer. This crane was also used to position the posts on the concrete floor. To stop unauthorised use, I fitted a key switch.

Lifting post into position



Hoist up and working GREAT!!!!



Not being blessed with the space that Herb has, I have to settle for something a little more [down to earth!](#)

VHI and all that - some of the wailing and gnashing of teeth that led up to the implementation of the latest changes.

September 2015: I've only just become aware of a proposal to extend the current exemption from needing an MOT for cars built before 1960, to cars built 40 or even 30 years ago following an EU rule-change. What is surprising is that the [government website for discussion of these proposals](#) closed nearly a year ago. The results of formal consultation are to be published in 'the second half of 2015', to be available for comment (*February 2016:* No sign of them yet).

[Classic Cars For Sale article](#)

[FBHVC statement](#)

[DFT statement](#)

[DFT background statement](#)

Brake pipe corrosion is probably the biggest single risk given that most potentially exempt British classics only have single circuit brakes. I was aware of one of the V8 pipes corroding and had been keeping an eye on it, when I got an advisory. That spurred me into changing it, and while carefully removing it trying to keep the shape as near as possible to use as a former for the replacement, it fractured at the point of corrosion.

It's one thing if we kill ourselves through inadequate maintenance, quite another if we kill a child while emergency braking/steering trying to avoid it. If we aren't prepared to spend £35 per year on what is actually a not very stringent safety check we shouldn't have the cars. The statistics may be on our side, but that's no comfort to the family of an innocent victim. Witness calls for airshows to be banned following Shoreham, despite the very stringent checks and controls on aircraft, particularly historic and display aircraft.

The proposals are said to be in part connected with an expected significant revamp of the MOT to cover electronic safety systems in much more detail. But surely the very fact our cars don't have those means that those tests simply wouldn't be applied. And whilst visible corrosion is very rarely seen on cars built in the last 20 years, surely structural corrosion, brake pipe damage, steering and suspension component wear, leaks from brake and fuel systems, seat-belts, wipers, lights, horn and tyres and still going to be checked on modern cars.

October 2017: Outcomes regarding the proposal to extend the MOT exemption for historic vehicles to be the same as for road tax i.e. a rolling 40 years were published in September, to be implemented from 20th May 2018. This is despite a majority of respondents to the Government's survey being against it. Legislation is still being drafted but the [consultation process](#) states that 'substantially altered' (their words) vehicles will still need annual testing. Guidance on what constitutes 'substantially altered' is expected in November 2017. The existing guidance document (updated in December, see above) confusingly contains information on "The process for vehicle keepers declaring an old vehicle is exempt from testing.", most of which relates to when a vehicle first becomes exempt from road tax, not where it already is exempt and will now become exempt from testing. However there is a section on online renewal, which only applies to vehicles that are already in the Historic Vehicle tax-free class, as follows:

"Where the vehicle keeper is re-licensing their vehicle on-line it is intended that an additional question be asked whether the vehicle has a current MOT and the vehicle keeper will be required to declare that their vehicle has not been substantially changed since 1988. Appropriate safeguards will be in place that will prevent a vehicle keeper from declaring the vehicle is over 40 years of age and progressing to the next stage of the licensing process before first declaring or not as to whether their vehicle has been substantially changed."

I can see the point about making a declaration that the vehicle has been substantially altered, as then it will ensure that an MOT is already in place before renewing the road tax. But I can't see the point in asking if the vehicle has a current MOT. It doesn't currently, it simply checks its own database before it will proceed. If you declare it HASN'T been substantially altered, then all it needs to do is NOT check to see if there is an MOT in place.

[The Government Response to the consultation](#) Para 13 Page 8 states:

The option for owners to submit their vehicles to a voluntary MOT test will remain and they will still, like all vehicle owners, need to ensure that they meet the legal requirement of keeping their vehicle in a roadworthy condition at all time (sic). Currently around 6% of the owners of pre-1960 vehicles submit their vehicles to voluntary testing and we would anticipate that many vehicle owners will service their vehicles regularly.

For the sake of around £40 per year most of us would have to be mad not to continue with voluntary testing, for peace of

mind as well as in the event of any 'discussions' with Police or Insurance company. It's a £2500 fine and 3 penalty points for using a vehicle in a dangerous condition. It's true that an MOT only shows that the vehicle met the requirements at the time of the test, i.e. not one day let alone 11 months later, but it is still better to be able to show one has made the effort to seek qualified opinion.

December 2017: The document on Vehicles of Historical Interest (VHI): Substantial Change Guidance [has been amended](#), but surprisingly it contains no date or issue information. The second half of page 1 is headed **The criteria for substantial change** and contains the following:

A vehicle will be considered substantially changed if the technical characteristics of the main components have changed in the previous 30 years, unless the changes fall into specific categories. These main components for vehicles, other than motorcycles², are:

- **Chassis** (replacements of the same pattern as the original are not considered a substantial change) **or Monocoque bodyshell** including any sub-frames (replacements of the same pattern as the original are not considered a substantial change);
- **Axles and running gear** - alteration of the type and or method of suspension or steering constitutes a substantial change;
- **Engine** - alternative cubic capacities of the same basic engine and alternative original equipment engines are not considered a substantial change. If the number of cylinders in an engine is different from the original, it is likely to be, but not necessarily, the case that the current engine is not alternative original equipment.

Bodies look to be OK, as even changes from GT to roadster (and reverse?) will still be using the originally available types.

For axles and running gear the document goes on to say "in respect of axles and running gear changes made to improve efficiency, safety or environmental performance" are considered acceptable.

As V8 versions of the MGB were available from the factory these conversions are probably OK, unless perhaps the original manufacturer is completely different. But then you can probably argue 'environmental' benefits for any modern low-emissions engine.

If you are in any doubt then the simple answer is NOT to attempt to register it as a VHI, and continue to have the compulsory annual MOT as before.

See also the [latest information from the FBHVC](#).

January 2018: This month's *Enjoying MG* contains a copy of a letter from the Department of Transport to the Beach Buggy Club who were querying historic status as applied to their heavily modified cars. The reply includes: "I should say that we are no longer proposing to use the DVLA's 8 point rule for determining whether a vehicle should be designated as 'substantially changed'. We are working on an alternative version in discussion with the Federation of British Historic Vehicle Clubs and other stakeholders. We hope to issue final guidance soon. Any VHI (vehicle of historic interest) that is substantially changed will merely be required to have an MOT test". So on the face of it vehicles 40 or more years old will not require re-registration or Q-plates no matter how extensively modified. Also further indication that VHIs are not automatically MOT-exempt as some have said.

Also after consultation about delaying the first test to four years, [it will remain at three](#). But given that 15% fail and most of those do so on tyres, lights and brakes maybe it should be brought forward!

May 2018: Having said all that, come the day and the upshot seems to be that only the most outrageous modifications involving structural bodywork are likely to be considered a substantial change, as the 'upgrades' typically talked about can probably all come under "changes made to improve efficiency, safety or environmental performance are considered acceptable", including more powerful engines when the emissions are lower. And even then if you don't attempt to declare it VHI and MOT-free then no one will know about it anyway ... except, one presumes, your insurance company for road-going cars.

Translate Fastener Part Numbers

Last updated 22-Dec-2023

[Part Number to Description](#)

[Description to Part Number](#)

Part Number to Description

56934	NIPPLE, GREASE, 90 DEGREE, 1/4" BSP
56935	NIPPLE, GREASE, STRAIGHT, 1/4" BSP
58688	STUD, UNC BOTH ENDS, 3/8" X 1 11/16"
58917	STUD, UNC BOTH ENDS, 3/8" X 1 15/16"
101442	STUD, UNC BOTH ENDS, 3/8" X 1 5/8"
102474	STUD, UNC BOTH ENDS, 3/8" X 2 1/16"
107055	STUD, UNC BOTH ENDS, 3/8" X 2 3/8"
108326	PIN, CLEVIS, 1/8" X 1/2"
115696	STUD, UNC BOTH ENDS, 3/8" X 1 13/16"
125361	NIPPLE, GREASE, 45 DEGREE, 1/4" BSP
144825	NIPPLE, GREASE, STRAIGHT, LONG, 1/8" BSP
600032	CAGE, CAPTIVE NUT, SQUARE, 1/2" AF
624155	CLIP, PIPE, Double, 3/16"
14A7033	GROMMET, 5/8"OD x 3/16"ID
14B2685	NUT, CHROME DOME, 5/16UNF
17H1595	CLIP, HEATERBOX, 3"
18G8579B	SEALS 7/8" DIA SERVO
1B3664	WASHER FIBRE 5/8"
1B4526.	BUSH, ANTIROLLBAR MOUNTING, 5/8"
27H7166	SCREW, BLEED, BRAKE/CLUTCH, 3/8" BSF
2H2065	GROMMET, WIRING, 1-5/8" x 5/8"
2K5291	WASHER, FELT 1/4"
2K5820	WASHER, FELT 3/8"
3H822	GROMMET, 3/4"OD x 1/2"ID
556508A	SCREW, BLEED, BRAKE/CLUTCH, 3/8" UNF
5L489	GROMMET 1-3/4 INCH
5L62	GROMMET 1"OD x 1/8"ID
608400A	SCREW, BLEED, BRAKE/CLUTCH, 10mm metric
6K431	WASHER, CRUSH, 3/4"
6K690	WASHER, FELT 3/16"
AB604021	SCREW, PAN HEAD, SELF TAP, ZINC, UNF, No.4 X 1/4"
AB604023	SCREW, PAN HEAD, SELF TAP, ZINC, UNF, NO.4 X 1"
AB606021	SCREW, PAN HEAD, SELF TAP, ZINC, UNF, No.6 X 1/4"
AB606031	SCREW, PAN HEAD, SELF TAP, ZINC, UNF, No.6 X 3/8"
AB606041	SCREW, PAN HEAD, SELF TAP, ZINC, UNF, No.6 X 1/2"
AB606051	SCREW, PAN HEAD, SELF TAP, NO 6 X 5/8"
AB606061	SCREW, PAN HEAD, SELF TAP, ZINC, UNF, No.6 X 3/4"
AB606081	SCREW, PAN HEAD, SELF TAP, ZINC, UNF, No.6 X 1"
AB608041	SCREW, PAN HEAD, SELF TAP, ZINC, UNF, No.8 X 1/2"
AB608061	SCREW, PAN HEAD, SELF TAP, ZINC, UNF, No.8 X 3/4"
AB608081	SCREW, PAN HEAD, SELF TAP, ZINC, UNF, No.8 X 1"
AB610041	SCREW, PAN HEAD, SELF TAP, ZINC, UNC, No.10 X 1/2"
AB610051	SCREW, PAN HEAD, SELF TAP, ZINC, UNC, NO.10 X 5/8"
AB610061	SCREW, PAN HEAD, SELF TAP, ZINC, UNC, No.10 X 3/4"
AB610081	SCREW, PAN HEAD, SELF TAP, ZINC, UNC, No.10 X 1"
AB612041	SCREW, PAN HEAD, SELF TAP, ZINC, UNC, No.12 X 1/2"
AB612061	SCREW, PAN HEAD, SELF TAP, ZINC, UNC, No.12 X 3/4"
AB612081	SCREW, PAN HEAD, SELF TAP, ZINC, UNC, No.12 X 1"
AB614061	SCREW, PAN HEAD, SELF TAP, ZINC, UNC, No.14 X 3/4"

AB614081	SCREW, PAN HEAD, SELF TAP, ZINC, UNC, No.14 X 1"
AC604021	SCREW, CSK, SELF TAP, ZINC, UNF, No.4 X 1/4"
AC606021	SCREW, CSK, SELF TAP, ZINC, UNF
AC606041	SCREW, CSK, SELF TAP, ZINC, UNF, No.6 X 1/2"
AC606061	SCREW, CSK, SELF TAP, ZINC, UNF, No.6 X 3/4"
AC606081	SCREW, CSK, SELF TAP, ZINC, UNF, No.6 X 1"
AC608041	SCREW, CSK, SELF TAP, ZINC, UNF, No.8 X 1/2"
AC608061	SCREW, CSK, SELF TAP, ZINC, UNF, No.8 X 3/4"
AC610041	SCREW, CSK, SELF TAP, ZINC, UNC, No.10 X 1/2"
AC610061	SCREW, CSK, SELF TAP, ZINC, UNC, No.10 X 3/4"
AC610081	SCREW, CSK, SELF TAP, ZINC, UNC, No.10 X 1"
AC612041	SCREW, CSK, SELF TAP, ZINC, UNC, No.12 X 1/2"
AC612081	SCREW, CSK, SELF TAP, ZINC, UNC, No.12 X 1"
AC614061	SCREW, CSK, SELF TAP, ZINC, UNC, No.14 X 3/4"
AC614081	SCREW, CSK, SELF TAP, ZINC, UNC, No.14 X 1"
ACA5521	WASHER, PLAIN, 1/2"
ACB8474	GROMMET speedo cable
AD606041	SCREW, RAISED CROSS CSK HEAD, SELF TAP, CHROME, NO.6 X 1/2"
AD606043	SCREW, RAISED CROSS CSK HEAD, SELF TAP, CHROME, NO.6 X 1/2"
AD606053	SCREW, RAISED CROSS CSK HEAD, SELF TAP, CHROME, NO.6 X 5/8"
AD606061	
AD606063	SCREW, RAISED CROSS CSK HEAD, SELF TAP, CHROME, NO.6 X 3/4"
AD606064	SCREW, RAISED CROSS CSK HEAD, SELF TAP, BLACK, NO.6 X 7/8"
AD606073	SCREW, RAISED CROSS CSK HEAD, SELF TAP, CHROME, NO.6 X 7/8"
AD606084	SCREW, RAISED CROSS CSK HEAD, SELF TAP, BLACK, NO,10 X 1 1/4"
AD608033	SCREW, RAISED CROSS CSK HEAD, SELF TAP, CHROME, NO.8 X 3/8"
AD608053	SCREW, RAISED CROSS CSK HEAD, SELF TAP, CHROME, NO.8 X 5/8"
AD608073	SCREW, RAISED CROSS CSK HEAD, SELF TAP, CHROME, NO.8 X 7/8"
AD610063	SCREW, RAISED CROSS CSK HEAD, SELF TAP, CHROME, NO.10 X 3/4"
AEC340	WASHER, LOCKTAB, 1/4" (LOCKS TWO BOLTS)
AEHU1	NUT, BRAKE/CLUTCH/FUEL PIPE, MALE, BRASS, 3/8" UNF PIPE DIA 3/16"
AEHU1A	NUT, BRAKE/CLUTCH/FUEL PIPE, FEMALE, BRASS, 3/8" UNF PIPE DIA 3/16"
AEHU2	NUT, BRAKE/CLUTCH/FUEL PIPE, MALE, BRASS, 10mm x 1mm PIPE DIA 3/16"
AEHU2A	NUT, BRAKE/CLUTCH/FUEL PIPE, FEMALE, BRASS, 10mm x 1mm PIPE DIA 3/16"
AEHU3	NUT, BRAKE/CLUTCH/FUEL PIPE, MALE, BRASS, 3/8" BSF PIPE DIA 3/16"
AEHU4A	NUT, BRAKE/CLUTCH/FUEL PIPE, FEMALE, BRASS, 7/16" UNF PIPE DIA 1/4"
AEHU7	NUT, BRAKE/CLUTCH/FUEL PIPE, MALE, BRASS, 7/16" UNF PIPE DIA 1/4"
AHH6541.	BUSH, ANTIROLLBAR MOUNTING, 9/16"
AHH7921.	BUSH, ANTIROLLBAR MOUNTING, 11/16"
AHH9239	SCREW, CSK, UNF, 1/4" X 1 3/8
AJD7721	WASHER, SPRING, DOUBLE COIL, 3/16"
AJD7722	WASHER, SPRING, DOUBLE COIL, 1/4"
AJD7731	WASHER, SPRING, DOUBLE COIL, 5/16"
AJD7742	WASHER, SPRING, DOUBLE COIL, 3/8"
AN3507	NUT, LOCK, FULL, 1/4"
AN3508	NUT, LOCK, FULL, 5/16"
AN3509	NUT, LOCK, FULL, 3/8"
AN3510	NUT, LOCK, FULL, 7/16"
AN3511	NUT, LOCK, FULL, 1/2"
AUSU40A	NUT, BRAKE/CLUTCH/FUEL PIPE, MALE, STEEL, 1/2" UNF PIPE DIA 5/16"
BCA4370	NUT, BRAKE/CLUTCH/FUEL PIPE, MALE, STEEL, 7/16" UNF PIPE DIA 3/16"
BH504091	BOLT, HEX HEAD, UNC, 1/4" X 1 1/8"
BH504111	BOLT, HEX HEAD, UNC, 1/4" X 1 3/8"
BH504121	BOLT, HEX HEAD, UNC, 1/4" X 1 1/2"
BH504141	BOLT, HEX HEAD, UNC, 1/4" X 1 3/4"
BH504161	BOLT, HEX HEAD, UNC, 1/4" X 2"
BH504181	BOLT, HEX HEAD, UNC, 1/4" X 2 1/4"
BH504201	BOLT, HEX HEAD, UNC, 1/4" X 2 1/2"
BH505101	BOLT, HEX, UNC, 5/16" X 1 1/4"

BH505111	BOLT, HEX, UNC, 5/16" X 1 3/8"
BH505121	BOLT, HEX, UNC, 5/16" X 1 1/2"
BH505141	BOLT, HEX, UNC, 5/16" X 1 3/4"
BH505161	BOLT, HEX, UNC, 5/16" X 2"
BH505181	BOLT, HEX, UNC, 5/16" X 2 1/4"
BH505201	BOLT, HEX, UNC, 5/16" X 2 1/2"
BH505241	BOLT, HEX, UNC, 5/16" X 3"
BH506081	BOLT, HEX, UNC, 3/8" X 1"
BH506111	BOLT, HEX, UNC, 3/8" X 1 3/8"
BH506121	BOLT, HEX, UNC, 3/8" X 1 1/2"
BH506141	BOLT, HEX, UNC, 3/8" X 1 3/4"
BH506161	BOLT, HEX, UNC, 3/8" X 2"
BH506181	BOLT, HEX, UNC, 3/8" X 2 1/4"
BH506201	BOLT, HEX, UNC, 3/8" X 2 1/2"
BH506241	BOLT, HEX, UNC, 3/8" X 3"
BH604081	BOLT, HEX HEAD, UNF, 1/4" X 1"
BH604091	BOLT, HEX HEAD, UNF, 1/4" X 1 1/8"
BH604101	BOLT, HEX HEAD, UNF, 1/4" X 1 1/4"
BH604111	BOLT, HEX HEAD, UNF, 1/4" X 1 3/8"
BH604121	BOLT, HEX HEAD, UNF, 1/4" X 1 1/2"
BH604141	BOLT, HEX HEAD, UNF, 1/4" X 1 3/4"
BH604161	BOLT, HEX HEAD, UNF, 1/4" X 2"
BH604181	BOLT, HEX HEAD, UNF, 1/4" X 2 1/4"
BH604201	BOLT, HEX HEAD, UNF, 1/4" X 2 1/2"
BH604221	BOLT, HEX HEAD, UNF, 1/4" X 2 3/4"
BH604241	BOLT, HEX HEAD, UNF, 1/4" X 3"
BH605091	BOLT, HEX HEAD, UNF, 5/16" X 1 1/8"
BH605101	BOLT, HEX HEAD, UNF, 5/16" X 1 1/4"
BH605111	BOLT, HEX HEAD, UNF, 5/16" X 1 3/8"
BH605121	BOLT, HEX HEAD, UNF, 5/16" X 1 1/2"
BH605141	BOLT, HEX HEAD, UNF, 5/16" X 1 3/4"
BH605151	BOLT, HEX HEAD, UNF, 5/16" X 1 7/8"
BH605161	BOLT, HEX HEAD, UNF, 5/16" X 2"
BH605181	BOLT, HEX HEAD, UNF, 5/16" X 2 1/4"
BH605191	BOLT, HEX HEAD, UNF, 5/16" X 2 3/8"
BH605201	BOLT, HEX HEAD, UNF, 5/16" X 2 1/2"
BH605221	BOLT, HEX HEAD, UNF, 5/16" X 2 3/4"
BH605241	BOLT, HEX HEAD, UNF, 5/16" X 3"
BH605261	BOLT, HEX HEAD, UNF, 5/16" X 3 1/4"
BH605281	BOLT, HEX HEAD, UNF, 5/16" X 3 1/2"
BH605401	BOLT, HEX HEAD, UNF, 5/16" X 5"
BH606081	BOLT, HEX HEAD, UNF, 3/8" X 1"
BH606091	BOLT, HEX HEAD, UNF, 3/8" X 1 1/8"
BH606101	BOLT, HEX HEAD, UNF, 3/8" X 1 1/4"
BH606111	BOLT, HEX HEAD, UNF, 3/8" X 1 3/8"
BH606121	BOLT, HEX HEAD, UNF, 3/8" X 1 1/2"
BH606141	BOLT, HEX HEAD, UNF, 3/8" X 1 3/4"
BH606161	BOLT, HEX HEAD, UNF, 3/8" X 2"
BH606181	BOLT, HEX HEAD, UNF, 3/8" X 2 1/4"
BH606201	BOLT, HEX HEAD, UNF, 3/8" X 2 1/2"
BH606221	BOLT, HEX HEAD, UNF, 3/8" X 2 3/4"
BH606241	BOLT, HEX HEAD, UNF, 3/8" X 3"
BH606261	BOLT, HEX HEAD, UNF, 3/8" X 3 1/4"
BH606281	BOLT, HEX HEAD, UNF, 3/8" X 3 1/2"
BH606301	BOLT, HEX HEAD, UNF, 3/8" X 3 3/4"
BH606321	BOLT, HEX HEAD, UNF, 3/8" X 4"
BH607121	BOLT, HEX HEAD, UNF, 7/16" X 1 1/2"
BH607141	BOLT, HEX HEAD, UNF, 7/16" X 1 3/4"
BH607161	BOLT, HEX HEAD, UNF, 7/16" X 2"

BH607181	BOLT, HEX HEAD, UNF, 7/16" X 2 1/4"
BH607201	BOLT, HEX HEAD, UNF, 7/16" X 2 1/2"
BH607241	BOLT, HEX HEAD, UNF, 7/16" X 3"
BH607281	BOLT, HEX HEAD, UNF, 7/16" X 3 1/2"
BH608141	BOLT, HEX HEAD, UNF, 1/2" X 1 3/4"
BH608161	BOLT, HEX HEAD, UNF, 1/2" X 2"
BH608181	BOLT, HEX HEAD, UNF, 1/2" X 2 1/4"
BH608201	BOLT, HEX HEAD, UNF, 1/2" X 2 1/2"
BH608241	BOLT, HEX HEAD, UNF, 1/2" X 3"
BHA4706	NUT, BRAKE/CLUTCH/FUEL PIPE, MALE, STEEL, 7/16" UNF PIPE DIA 1/4"
BLS106	BALL, STEEL, 3/16"
BLS108	BALL, STEEL, 1/4"
BLS110	BALL, STEEL, 5/16"
BLS112	BALL, STEEL, 3/8"
BLS28	BALL, STEEL, 7/16"
BMK385	CLIP, FUEL PIPE, 1/4"
BNN105	NUT, HEX BRASS, UNF, 5/16"
C5192A	BOLT, BANJO, UNF3/8"
CFP1000	GROMMET, BLANKING, PLASTIC, 1"
CFP375	GROMMET, BLANKING, PLASTIC, 3/8"
CFP500	GROMMET, BLANKING, PLASTIC, 1/2"
CFP625	GROMMET, BLANKING, PLASTIC, 5/8"
CFP750	GROMMET, BLANKING, PLASTIC, 3/4"
CHS2513	STUD, 5/16"x1-5/8", UNC/UNF
CLZ307	PIN, CLEVIS, LENGTH IS FROM UNDER HEAD TO CENTRE OF HOLE, 3/16" X 7/16"
CLZ308	PIN, CLEVIS, LENGTH IS FROM UNDER HEAD TO CENTRE OF HOLE, 3/16" X 1/2"
CLZ309	PIN, CLEVIS, LENGTH IS FROM UNDER HEAD TO CENTRE OF HOLE, 3/16" X 9/16"
CLZ310	PIN, CLEVIS, LENGTH IS FROM UNDER HEAD TO CENTRE OF HOLE, 3/16" X 5/8"
CLZ311	PIN, CLEVIS, LENGTH IS FROM UNDER HEAD TO CENTRE OF HOLE, 3/16" X 11/16"
CLZ312	PIN, CLEVIS, LENGTH IS FROM UNDER HEAD TO CENTRE OF HOLE, 3/16" X 3/4"
CLZ313	PIN, CLEVIS, LENGTH IS FROM UNDER HEAD TO CENTRE OF HOLE, 3/16" X 13/16"
CLZ314	PIN, CLEVIS, LENGTH IS FROM UNDER HEAD TO CENTRE OF HOLE, 3/16" X 7/8"
CLZ315	PIN, CLEVIS, LENGTH IS FROM UNDER HEAD TO CENTRE OF HOLE, 3/16" X 15/16"
CLZ316	PIN, CLEVIS, LENGTH IS FROM UNDER HEAD TO CENTRE OF HOLE, 3/16" X 1"
CLZ317	PIN, CLEVIS, LENGTH IS FROM UNDER HEAD TO CENTRE OF HOLE, 3/16" X 1 1/16"
CLZ408	PIN, CLEVIS, LENGTH IS FROM UNDER HEAD TO CENTRE OF HOLE, 1/4" X 1/2"
CLZ409	PIN, CLEVIS, LENGTH IS FROM UNDER HEAD TO CENTRE OF HOLE, 1/4" X 9/19"
CLZ410	PIN, CLEVIS, LENGTH IS FROM UNDER HEAD TO CENTRE OF HOLE, 1/4" X 5/8"
CLZ411	PIN, CLEVIS, LENGTH IS FROM UNDER HEAD TO CENTRE OF HOLE, 1/4" X 11/16"
CLZ412	PIN, CLEVIS, LENGTH IS FROM UNDER HEAD TO CENTRE OF HOLE, 1/4" X 3/4"
CLZ413	PIN, CLEVIS, LENGTH IS FROM UNDER HEAD TO CENTRE OF HOLE, 1/4" X 13/16"
CLZ414	PIN, CLEVIS, LENGTH IS FROM UNDER HEAD TO CENTRE OF HOLE, 1/4" X 7/8"
CLZ415	PIN, CLEVIS, LENGTH IS FROM UNDER HEAD TO CENTRE OF HOLE, 1/4" X 15/16"
CLZ416	PIN, CLEVIS, LENGTH IS FROM UNDER HEAD TO CENTRE OF HOLE, 1/4" X 1"
CLZ417	PIN, CLEVIS, LENGTH IS FROM UNDER HEAD TO CENTRE OF HOLE, 1/4" X 1 1/16"
CLZ427	PIN, CLEVIS, LENGTH IS FROM UNDER HEAD TO CENTRE OF HOLE, 1/4" X 1 11/16"
CLZ510	PIN, CLEVIS, LENGTH IS FROM UNDER HEAD TO CENTRE OF HOLE, 5/16" X 5/8"
CLZ511	PIN, CLEVIS, LENGTH IS FROM UNDER HEAD TO CENTRE OF HOLE, 5/16" X 11/16"
CLZ512	PIN, CLEVIS, LENGTH IS FROM UNDER HEAD TO CENTRE OF HOLE, 5/16" X 3/4"
CLZ513	PIN, CLEVIS, LENGTH IS FROM UNDER HEAD TO CENTRE OF HOLE, 5/16" X 13/16"
CLZ514	PIN, CLEVIS, LENGTH IS FROM UNDER HEAD TO CENTRE OF HOLE, 5/16" X 7/8"
CLZ515	PIN, CLEVIS, LENGTH IS FROM UNDER HEAD TO CENTRE OF HOLE, 5/16" X 15/16"
CLZ516	PIN, CLEVIS, LENGTH IS FROM UNDER HEAD TO CENTRE OF HOLE, 5/16" X 1"
CLZ517	PIN, CLEVIS, LENGTH IS FROM UNDER HEAD TO CENTRE OF HOLE, 5/16" X 1 1/16"
CLZ518	PIN, CLEVIS, LENGTH IS FROM UNDER HEAD TO CENTRE OF HOLE, 5/16" X 1 1/18"
CMP308	SCREW, CROSS HEAD, CSK, CHROME, UNF, NO.10 X 1/2"
CMP310	SCREW, CROSS HEAD, CSK, CHROME, UNF, NO.10 X 5/8"
CMZ203	SCREW, CROSS HEAD, CSK, ZINC, UNF, NO.6 X 3/16"
CMZ204	SCREW, CROSS HEAD, CSK, ZINC, UNF, NO.6 X 1/4"

CMZ208	SCREW, CROSS HEAD, CSK, ZINC, UNF, NO.6 X 1/2"
CMZ304	SCREW, CROSS HEAD, CSK, ZINC, UNF, NO.10 X 1/4"
CMZ305	SCREW, CROSS HEAD, CSK, ZINC, UNF, NO.10 X 5/16"
CMZ306	SCREW, CROSS HEAD, CSK, ZINC, UNF, NO.10 X 3/8"
CMZ307	SCREW, CROSS HEAD, CSK, ZINC, UNF, NO.10 X 7/16"
CMZ308	SCREW, CROSS HEAD, CSK, ZINC, UNF, NO.10 X 1/2"
CMZ310	SCREW, CROSS HEAD, CSK, ZINC, UNF, NO.10 X 5/8"
CMZ312	SCREW, CROSS HEAD, CSK, ZINC, UNF, NO.10 X 3/4"
CMZ316	SCREW, CROSS HEAD, CSK, ZINC, UNF, NO.10 X 1"
CMZ407	SCREW, CROSS HEAD, CSK, ZINC, UNF, 1/4", 7/16"
CMZ408	SCREW, CROSS HEAD, CSK, ZINC, UNF, 1/4", 1/2"
CMZ410	SCREW, CROSS HEAD, CSK, ZINC, UNF, 1/4", 5/8"
CMZ412	SCREW, CROSS HEAD, CSK, ZINC, UNF, 1/4", 3/4"
CMZ414	SCREW, CROSS HEAD, CSK, ZINC, UNF, 1/4", 7/8"
CMZ416	SCREW, CROSS HEAD, CSK, ZINC, UNF, 1/4", 1"
CMZ420	SCREW, CROSS HEAD, CSK, ZINC, UNF, 1/4", 1 1/4"
CMZ428	SCREW, CROSS HEAD, CSK, ZINC, UNF, 1/4", 1 3/4"
CMZ512	SCREW, CROSS HEAD, CSK, ZINC, UNF, 5/16, 3/4"
CMZ516	SCREW, CROSS HEAD, CSK, ZINC, UNF, 5/16", 1"
CN2	CAGE, CAPTIVE NUT, SQUARE, 7/16" AF
CN3	CAGE, CAPTIVE NUT, OBLONG, 7/16" AF
CN4	NUT, CAPTIVE, USE CAGE CN3, 1/4"
CN5	NUT, CAPTIVE, USE CAGE, 60032, 5/16"
CNZ102	NUT, HEX, ZINC, UNF, NO.6
CP105081	CLIP, P-CLIP, METRIC, FIXING HOLE, 5mm CABLE DIA 8mm
CP106161	CLIP, P-CLIP, METRIC, FIXING HOLE, 6mm CABLE DIA 16mm
CP108101	CLIP, P-CLIP, METRIC, FIXING HOLE, 8mm CABLE DIA 10mm
CP108121	CLIP, P-CLIP, METRIC, FIXING HOLE, 8mm CABLE DIA 12mm
CP108165	CLIP, P-CLIP, METRIC, FIXING HOLE, 8mm CABLE DIA 16mm
CS4009	CLIP, HOSE, WIRE, 7/16" - 9/16"
CS4011	CLIP, HOSE, WIRE, 1/2" - 11/16"
CS4012	CLIP, HOSE, WIRE, 9/16" - 3/4"
CS4013	CLIP, HOSE, WIRE, 5/8" - 13/16"
CS4014	CLIP, HOSE, WIRE, 11/16" - 7/8"
CS4016	CLIP, HOSE, WIRE, 3/4" - 1"
CS4017	CLIP, HOSE, WIRE, 13/16" - 1 1/16"
CS4018	CLIP, HOSE, WIRE, 7/8" - 1 1/8"
CS4020	CLIP, HOSE, WIRE, 1" - 1 1/4"
CS4022	CLIP, HOSE, WIRE, 1 1/8" - 1 3/8"
CS4023	CLIP, HOSE, WIRE, 1 1/4" - 1 7/16"
CS4024	CLIP, HOSE, WIRE, 1 5/16" - 1 1/2"
CS4025	CLIP, HOSE, WIRE, 1 3/8" - 1 9/16"
CS4026	CLIP, HOSE, WIRE, 1 7/16" - 1 5/8"
CS4028	CLIP, HOSE, WIRE, 1 9/16" - 1 3/4"
CS4029	CLIP, HOSE, WIRE, 1 5/8" - 1 13/16"
CS4030	CLIP, HOSE, WIRE, 1 11/16" - 1 7/8"
CS4032	CLIP, HOSE, WIRE, 1 7/8" - 2"
CS4034	CLIP, HOSE, WIRE, 1 15/16" - 2 1/8"
CS4036	CLIP, HOSE, WIRE, 2 1/16" - 2 1/4"
CS4037	CLIP, HOSE, WIRE, 2 1/8" - 2 5/16"
CS4038	CLIP, HOSE, WIRE, 2 3/16" - 2 7/16"
CS4039	CLIP, HOSE, WIRE, 2 1/4" - 2 7/16"
CS4040	CLIP, HOSE, WIRE, 2 5/16" - 2 1/2"
CS4041	CLIP, HOSE, WIRE, 2 3/8" - 2 9/16"
CS4042	CLIP, HOSE, WIRE, 2 7/16" - 2 5/8"
CS4048	CLIP, HOSE, WIRE, 2 13/16" - 3"
CS4052	CLIP, HOSE, WIRE, 3 1/16" - 3 1/4"
CS4064	CLIP, HOSE, WIRE, 3 13/16" - 4"
DP204	DOWEL, 1/8" X 1/4"

DP205	DOWEL, 1/8" X 5/16"
DP306	DOWEL, 3/16" X 3/8"
DP407	DOWEL, 1/4" X 7/16"
DP408	DOWEL, 1/4" X 1/2"
DP410	DOWEL, 1/4" X 5/8"
DP411	DOWEL, 1/4" X 11/16"
DP414	DOWEL, 1/4" X 7/8"
DP508	DOWEL, 5/16" X 1/2"
DP514	DOWEL, 5/16" X 7/8"
DP608	DOWEL, 3/8" X 1/2"
DP610	DOWEL, 3/8" X 5/8"
DP619	DOWEL, 3/8" X 1 3/16"
FNN104	NUT, HEX, PLAIN, UNF, 1/4"
FNN105	NUT, HEX, PLAIN, UNF, 5/16"
FNN107	NUT, HEX, PLAIN, UNF, 7/16"
FNN207	NUT, LOCK, HEX, PLAIN, UNF, 7/16"
FNN604	NUT, LOCK, HEX, PLAIN, HIGH TENSILE, UNF, 1/4"
FNP103	NUT, LOCK, HEX, CHROME, UNF, NO.10
FNP205	NUT, LOCK, HEX, PLAIN, UNF, 5/16"
FNZ103	NUT, HEX, ZINC, UNF, NO.10
FNZ104	NUT, HEX, ZINC, UNF, 1/4"
FNZ105	NUT, HEX, ZINC, UNF, 5/16"
FNZ106	NUT, HEX, ZINC, UNF, 3/8"
FNZ107	NUT, HEX, ZINC, UNF, 7/16"
FNZ108	NUT, HEX, ZINC, UNF, 1/2"
FNZ204	NUT, LOCK, HEX, ZINC, UNF, 1/4"
FNZ205	NUT, LOCK, HEX, ZINC, UNF, 5/16"
FNZ206	NUT, LOCK, HEX, ZINC, UNF, 3/8"
FNZ308	NUT, HEX, SLOTTED, THICK, ZINC, UNF, 1/2"
FNZ407	NUT, HEX, SLOTTED, ZINC, UNF, 7/16"
FNZ408	NUT, HEX, SLOTTED, ZINC, UNF, 1/2"
FNZ504	NUT, HEX, HIGH TENSILE, ZINC, UNF, 1/4"
FNZ505	NUT, HEX, HIGH TENSILE, ZINC, UNF, 5/16"
FNZ506	NUT, HEX, HIGH TENSILE, ZINC, UNF, 3/8"
FNZ507	NUT, HEX, HIGH TENSILE, ZINC, UNF, 7/16"
FNZ508	NUT, HEX, HIGH TENSILE, ZINC, UNF, 1/2"
FNZ512	NUT, HEX, HIGH TENSILE, ZINC, UNF, 3/4"
FNZ604	NUT, HEX, LOCK, HIGH TENSILE, ZINC, UNF, 1/4"
FNZ607	NUT, HEX, LOCK, HIGH TENSILE, ZINC, UNF, 7/16"
FNZ612	NUT, HEX, LOCK, HIGH TENSILE, ZINC, UNF, 3/4"
GGT1108X	CLIP, PETROL PIPE, ENOT, 8mm
GGT1109X	CLIP, PETROL PIPE, ENOT, 9mm
GGT1110X	CLIP, PETROL PIPE, ENOT, 10mm
GGT1111X	CLIP, PETROL PIPE, ENOT, 11mm
GGT1112X	CLIP, PETROL PIPE, ENOT, 12mm
GGT1113X	CLIP, PETROL PIPE, ENOT, 13mm
GGT1114X	CLIP, PETROL PIPE, ENOT, 14mm
GGT1115X	CLIP, PETROL PIPE, ENOT, 15mm
GGT1116X	CLIP, PETROL PIPE, ENOT, 16mm
GGT1117X	CLIP, PETROL PIPE, ENOT, 17mm
GHC1015	CLIP, HOSE, JUBILEE, STEEL, 1 3/8" - 2"
GHC10408	CLIP, HOSE, JUBILEE, STAINLESS, 8-12mm
GHC10410	CLIP, HOSE, JUBILEE, STAINLESS, 12-18mm
GHC10411	CLIP, HOSE, JUBILEE, STAINLESS, 8-16mm
GHC10412	CLIP, HOSE, JUBILEE, STAINLESS, 12-20mm
GHC10413	CLIP, HOSE, JUBILEE, STAINLESS, 16-25mm
GHC10414	CLIP, HOSE, JUBILEE, STAINLESS, 20-32mm
GHC10415	CLIP, HOSE, JUBILEE, STAINLESS, 25-40mm
GHC10416	CLIP, HOSE, JUBILEE, STAINLESS, 32-50mm

GHC10417	CLIP, HOSE, JUBILEE, STAINLESS, 46-60mm
GHC10418	CLIP, HOSE, JUBILEE, STAINLESS, 50-70mm
GHC10419	CLIP, HOSE, JUBILEE, STAINLESS, 60-80mm
GHC10420	CLIP, HOSE, JUBILEE, STAINLESS, 70-90mm
GHC10421	CLIP, HOSE, JUBILEE, STAINLESS, 80-100mm
GHC1217	CLIP, HOSE, JUBILEE, STEEL, 1 1/2" - 2 1/4"
GHC1622	CLIP, HOSE, JUBILEE, STEEL, 2" - 2 3/4"
GHC2228	CLIP, HOSE, JUBILEE, STEEL, 2 3/4" - 3 1/2"
GHC2632	CLIP, HOSE, JUBILEE, STEEL, 3 1/4" - 4"
GHC3036	CLIP, HOSE, JUBILEE, STEEL, 3 3/4" - 4 1/2"
GHC304	CLIP, HOSE, JUBILEE, STEEL, 3/8" - 1/2"
GHC3340	CLIP, HOSE, JUBILEE, STEEL, 4 1/8" - 5"
GHC405	CLIP, HOSE, JUBILEE, STEEL, 7/16" - 5/8"
GHC406	CLIP, HOSE, JUBILEE, STEEL, 1/2" - 3/4"
GHC507	CLIP, HOSE, JUBILEE, STEEL, 5/8" - 7/8"
GHC608	CLIP, HOSE, JUBILEE, STEEL, 3/4" - 1"
GHC709	CLIP, HOSE, JUBILEE, STEEL, 5/8" - 1 1/8"
GHC811	CLIP, HOSE, JUBILEE, STEEL, 1" - 1 3/8"
GHC913	CLIP, HOSE, JUBILEE, STEEL, 1 1/8" - 1 5/8"
GHF104	BOLT, UNF, 5/16" X 1 1/2"
GHF105	BOLT, UNF, 3/8" X 1" (shorter of the two starter motor mounting bolts)
GHF106	BOLT, UNF, 3/8" X 1 1/2"
GHF117	SCREW 1/4" UNF x 0.75"
GHF1191	CLIP, PIPE, Single, 3/16"
GHF1192	CLIP, PIPE, Single, 1/4"
GHF200	NUT, PLAIN, FULL, 1/4" UNF X 7/16"
GHF201	NUT, PLAIN, FULL, 5/16" UNF X 1/2"
GHF202	NUT, PLAIN, FULL, 3/8" UNF X 9/16"
GHF203	NUT, PLAIN, FULL, 7/16" UNF X 5/8"
GHF204	NUT, PLAIN, FULL, 1/2" UNF X 3/4"
GHF206	NUT, PLAIN, FULL, SPANNER SIZE 5/16", 3/16"
GHF207	NUT, PLAIN, FULL, 1/4" UNC X 7/16"
GHF208	NUT, PLAIN, FULL, 5/16" UNC X 1/2"
GHF209	NUT, PLAIN, FULL, 3/8" UNC X 9/16"
GHF211	NUT M4 METRIC
GHF220	NUT, NYLOC, FULL, 3/16" UNF
GHF2203	NUT, NYLOC, FULL 3/16" UNF X 3/8"
GHF221	NUT, NYLOC, FULL, 1/4" UNF
GHF222	NUT, NYLOC, FULL, 5/16" UNF
GHF223	NUT, NYLOC, FULL, 3/8" UNF
GHF224	NUT, NYLOC, FULL, 7/16" UNF
GHF225	NUT, NYLOC, FULL, 1/2" UNF
GHF226	NUT, NYLOC, FULL, 5/8" UNF
GHF241	NUT, LOCKING, 1/4" UNF
GHF242	NUT, LOCKING, 5/16" UNF
GHF243	NUT, LOCKING, 3/8" UNF
GHF244	NUT, LOCKING, 7/16" UNF
GHF245	NUT, LOCKING, 1/2" UNF
GHF261	NUT, BRASS, PLAIN, 5/16" UNF
GHF262	NUT, BRASS, PLAIN, 3/8" UNF
GHF269	NUT, BRASS, PLAIN, 3/8" UNC
GHF270	NUT, BRASS, PLAIN, 5/16" UNC
GHF271	NUT, NYLOC, HALF, 1/4"
GHF272	NUT, NYLOC, HALF, 5/16" UNF
GHF273	NUT, NYLOC, HALF, 3/8" UNF
GHF274	NUT, NYLOC, HALF, 7/16" UNF
GHF275	NUT, NYLOC, HALF, 1/2" UNF
GHF276	NUT, NYLOC, HALF, 5/8" UNF
GHF300	WASHER, PLAIN, STANDARD, 1/4"

GHF301	WASHER, PLAIN, STANDARD, 5/16"
GHF302	WASHER, PLAIN, STANDARD, 3/8"
GHF303	WASHER, PLAIN, STANDARD, 7/16"
GHF304	WASHER, PLAIN, STANDARD, 1/2"
GHF306	WASHER, PLAIN, STANDARD, 3/16"
GHF314	WASHER, FLAT, LARGE 1/4 X 1" OD
GHF315	WASHER, FLAT, LARGE, 5/16 X 1-1/4" OD
GHF316	WASHER, FLAT, LARGE, 3/8 X 1-3/8" OD
GHF320	WASHER, SHAKEPROOF, INTERNAL STAR, 3/16"
GHF321	WASHER, SHAKEPROOF, INTERNAL STAR, 1/4"
GHF322	WASHER, SHAKEPROOF, INTERNAL STAR, 5/16"
GHF323	WASHER, SHAKEPROOF, INTERNAL STAR, 3/8"
GHF324	WASHER, SHAKEPROOF, INTERNAL STAR, 7/16"
GHF325	WASHER, SHAKEPROOF, INTERNAL STAR, 1/2"
GHF326	WASHER, SHAKEPROOF, INTERNAL STAR, 5/8"
GHF330	WASHER, SPRING, 3/16"
GHF331	WASHER, SPRING, SINGLE COIL, 1/4"
GHF332	WASHER, SPRING, SINGLE COIL, 5/16"
GHF333	WASHER, SPRING, SINGLE COIL, 3/8"
GHF334	WASHER, SPRING, SINGLE COIL, 7/16"
GHF335	WASHER, SPRING, SINGLE COIL, 1/2"
GHF336	WASHER, SPRING, SINGLE COIL, 5/8"
GHF342	WASHER, SEALING, FIBRE, 1/4"
GHF343	WASHER, SEALING, FIBRE, 5/16"
GHF344	WASHER, SEALING, FIBRE, 3/8"
GHF345	WASHER, SEALING, FIBRE, 7/16"
GHF346	WASHER, SEALING, FIBRE, 1/2"
GHF347	WASHER, SEALING, FIBRE, 9/16"
GHF348	WASHER, SEALING, FIBRE, 5/8"
GHF361	WASHER, SEALING, COPPER, 1/4"
GHF362	WASHER, SEALING, COPPER, 5/16"
GHF363	WASHER, SEALING, COPPER, 3/8"
GHF364	WASHER, SEALING, COPPER, 7/16"
GHF365	WASHER, SEALING, COPPER, 1/2"
GHF400	SCREW, SELF TAP, ZINC No.6 X 1/2"(AC606041)
GHF421	SCREW 6X 1/2 AB606041, SELF TAP
GHF431	SCREW, PK, No.14 x 1", SELF TAP
GHF500	PIN, SPLIT, 1/16" X 1 1/2"
GHF501	PIN, SPLIT, 5/64" X 1 1/2"
GHF502	PIN, SPLIT, 3/32" X 1 1/2"
GHF503	PIN, SPLIT, 7/64" X 2 1/4"
GHF504	PIN, SPLIT, 1/8" X 2 1/4"
GHF505	PIN, SPLIT, 9/64" X 2 1/4"
GHF506	PIN, SPLIT, 3/32" X 2 1/4"
GHF513	PIN, SPLIT, 3/16" X 3"
GHF700	NUT, SPIRE, FLAT, No.6
GHF701	NUT, SPIRE, FLAT, No.8
GHF702	NUT, SPIRE, FLAT, No.10
GHF703	NUT, SPIRE, FLAT, No.12
GHF704	NUT, SPIRE, FLAT, No.14
GHF711	NUT, SPIRE, FOLDED, No.6
GHF712	NUT, SPIRE, FOLDED, No.8
GHF713	NUT, SPIRE, FOLDED, No.10
GHF714	NUT, SPIRE, FOLDED, No.12
HBN412	BOLT, HEX HEAD, UNF, PLAIN, 1/4" X 1 1/2"
HBZ408	BOLT, HEX HEAD, UNF, ZINC, 1/4" X 1"
HBZ418	BOLT, HEX HEAD, UNF, ZINC, 1/4" X 2 1/4"
HBZ422	BOLT, HEX HEAD, UNF, ZINC, 1/4" X 2 3/4"
HBZ510	BOLT, HEX HEAD, UNF, ZINC, 5/16" X 1 1/4"

HBZ511	BOLT, HEX HEAD, UNF, ZINC, 5/16" X 1 3/8"
HBZ512	BOLT, HEX HEAD, UNF, ZINC, 5/16" X 1 1/2"
HBZ513	BOLT, HEX HEAD, UNF, ZINC, 5/16" X 1 5/8"
HBZ514	BOLT, HEX HEAD, UNF, ZINC, 5/16" X 1 3/4"
HBZ515	BOLT, HEX HEAD, UNF, ZINC, 5/16" X 1 7/8"
HBZ516	BOLT, HEX HEAD, UNF, ZINC, 5/16" X 2"
HBZ518	BOLT, HEX HEAD, UNF, ZINC, 5/16" X 2 1/4"
HBZ520	BOLT, HEX HEAD, UNF, ZINC, 5/16" X 2 1/2"
HBZ522	BOLT, HEX HEAD, UNF, ZINC, 5/16" X 2 3/4"
HBZ524	BOLT, HEX HEAD, UNF, ZINC, 5/16" X 3"
HBZ526	BOLT, HEX HEAD, UNF, ZINC, 5/16" X 3 1/4"
HBZ528	BOLT, HEX HEAD, UNF, ZINC, 5/16" X 3 1/2"
HBZ612	BOLT, HEX HEAD, UNF, ZINC, 3/8" X 1 1/2"
HBZ614	BOLT, HEX HEAD, UNF, ZINC, 3/8" X 1 3/4"
HBZ616	BOLT, HEX HEAD, UNF, ZINC, 3/8" X 2"
HBZ632	BOLT, HEX HEAD, UNF, ZINC, 3/8" X 4"
HBZ726	BOLT, HEX HEAD, UNF, ZINC, 7/16" X 3 1/4"
HBZ732	BOLT, HEX HEAD, UNF, ZINC, 7/16" X 4"
HCZ518	BOLT, HEX HEAD, UNC, ZINC, 5/16" X 2 1/4"
HCZ608	BOLT, HEX HEAD, UNC, ZINC, 3/8" X 1"
HCZ613	BOLT, HEX HEAD, UNC, ZINC, 3/8" X 1 5/8"
HCZ824	BOLT, HEX HEAD, UNC, ZINC, 1/2" X 3"
HN2003	NUT, PLAIN, FULL, UNF, SPANNER SIZE 5/16"NO.6
HN2005	NUT, PLAIN, FULL, SPANNER SIZE 3/8", 3/16"
HN2007	NUT, PLAIN, FULL, 1/4"
HN2008	NUT, PLAIN, FULL, 5/16"
HN2009	NUT, PLAIN, FULL, 3/8"
HN2010	NUT, PLAIN, FULL, 7/16"
HN2011	NUT, PLAIN, FULL, 1/2"
HN2012	NUT, PLAIN, FULL, 9/16"
HN2013	NUT, PLAIN, FULL, 5/8"
HN2057	NUT, PLAIN, FULL, 1/4"
HN2058	NUT, PLAIN, FULL, 5/16"
HN2059	NUT, PLAIN, FULL, 3/8"
HNS412	SCREW, HEX HEAD, FULL THREAD, UNF, PLAIN, 1/4" X 1 1/2"
HNS505	SCREW, HEX HEAD, FULL THREAD, UNF, PLAIN, 5/16" X 5/8"
HNS507	SCREW, HEX HEAD, FULL THREAD, UNF, PLAIN, 5/16" X 7/8"
HU41A	NUT, BRAKE/CLUTCH/FUEL PIPE, FEMALE, STEEL, 1/2" UNF PIPE DIA 5/16"
HU503	SCREW, SET, HEX HEAD, UNF, 3/16" X 3/8"
HU504	SCREW, SET, HEX HEAD, UNF, 3/16" X 1/2"
HU505	SCREW, SET, HEX HEAD, UNF, 3/16" X 5/8"
HU506	SCREW, SET, HEX HEAD, UNF, 3/16" X 3/4"
HU507	SCREW, SET, HEX HEAD, UNF, 3/16" X 7/8"
HU508	SCREW, SET, HEX HEAD, UNF, 3/16" X 1"
HZS126	
HZS403	SCREW, HEX HEAD, FULL THREAD, UNF, ZINC, 1/4" X 3/8"
HZS404	SCREW, HEX HEAD, FULL THREAD, UNF, ZINC, 1/4" X 1/2"
HZS405	SCREW, HEX HEAD, FULL THREAD, UNF, ZINC, 1/4" X 5/8"
HZS406	SCREW, HEX HEAD, FULL THREAD, UNF, ZINC, 1/4" X 3/4"
HZS407	SCREW, HEX HEAD, FULL THREAD, UNF, ZINC, 1/4" X 7/8"
HZS408	SCREW, HEX HEAD, FULL THREAD, UNF, ZINC, 1/4" X 1"
HZS409	SCREW, HEX HEAD, FULL THREAD, UNF, ZINC, 1/4" X 1 1/8"
HZS410	SCREW, HEX HEAD, FULL THREAD, UNF, ZINC, 1/4" X 1 1/4"
HZS411	SCREW, HEX HEAD, FULL THREAD, UNF, ZINC, 1/4" X 1 3/8"
HZS412	SCREW, HEX HEAD, FULL THREAD, UNF, ZINC, 1/4" X 1 1/2"
HZS415	SCREW, HEX HEAD, FULL THREAD, UNF, ZINC, 1/4" X 1 7/8"
HZS416	SCREW, HEX HEAD, FULL THREAD, UNF, ZINC, 1/4" X 2"
HZS504	SCREW, HEX HEAD, FULL THREAD, UNF, ZINC, 5/16" X 1/2"
HZS505	SCREW, HEX HEAD, FULL THREAD, UNF, ZINC, 5/16" X 5/8"

HZS506	SCREW, HEX HEAD, FULL THREAD, UNF, ZINC, 5/16" X 3/4"
HZS507	SCREW, HEX HEAD, FULL THREAD, UNF, ZINC, 5/16" X 7/8"
HZS508	SCREW, HEX HEAD, FULL THREAD, UNF, ZINC, 5/16" X 1"
HZS509	SCREW, HEX HEAD, FULL THREAD, UNF, ZINC, 5/16" X 1 1/8"
HZS510	SCREW, HEX HEAD, FULL THREAD, UNF, ZINC, 5/16" X 1 1/4"
HZS511	SCREW, HEX HEAD, FULL THREAD, UNF, ZINC, 5/16" X 1 3/8"
HZS514	SCREW, HEX HEAD, FULL THREAD, UNF, ZINC, 5/16" X 1 3/4"
HZS603	SCREW, HEX HEAD, FULL THREAD, UNF, ZINC, 3/8" X 3/8"
HZS606	SCREW, HEX HEAD, FULL THREAD, UNF, ZINC, 3/8" X 3/4"
HZS607	SCREW, HEX HEAD, FULL THREAD, UNF, ZINC, 3/8" X 7/8"
HZS608	SCREW, HEX HEAD, FULL THREAD, UNF, ZINC, 3/8" X 1"
HZS610	SCREW, HEX HEAD, FULL THREAD, UNF, ZINC, 3/8" X 1 1/4"
HZS710	SCREW, HEX HEAD, FULL THREAD, UNF, ZINC, 7/16" X 1 1/4"
JN2108	NUT, PLAIN, HALF, 5/16"
JN2109	NUT, PLAIN, HALF, 3/8"
JN2110	NUT, PLAIN, HALF, 7/16"
JN2111	NUT, PLAIN, HALF, 1/2"
JN2112	NUT, PLAIN, HALF, 9/16"
JN2113	NUT, PLAIN, HALF, 5/8"
JN2157	NUT, PLAIN, HALF, 1/4"
JN2158	NUT, PLAIN, HALF, 5/16"
JN2159	NUT, PLAIN, HALF, 3/8"
LK21994	NUT, BRAKE/CLUTCH/FUEL PIPE, MALE, STEEL, 3/8" BSF PIPE DIA 3/16"
LN2209	NUT, CASTLE, HALF, 3/8"
LN2211	NUT, CASTLE, HALF, 1/2"
LN2212	NUT, CASTLE, HALF, 9/16"
LN30041	NIPPLE, GREASE, 90 DEGREE, 1/8" BSP
LNN208	NUT, LOCK, PLAIN, UNF, 1/2"
LNZ102	NUT, LOCK, ZINC, UNF, NO.6
LNZ103	NUT, LOCK, ZINC, UNF, NO.10
LNZ104	NUT, LOCK, ZINC, UNF, 1/4"
LNZ105	NUT, LOCK, ZINC, UNF, 5/16"
LNZ106	NUT, LOCK, ZINC, UNF, 3/8"
LNZ108	NUT, LOCK, ZINC, UNF, 1/2"
LNZ203	NUT, NYLOCK, ZINC, UNF, NO.10
LNZ204	NUT, NYLOCK, ZINC, UNF, 1/4"
LNZ205	NUT, NYLOCK, ZINC, UNF, 5/16"
LNZ206	NUT, NYLOCK, ZINC, UNF, 3/8"
LNZ207	NUT, NYLOCK, ZINC, UNF, 7/16"
LNZ208	NUT, NYLOCK, ZINC, UNF, 1/2"
LNZ405	NUT, LOCK, ZINC, UNF, 5/16"
LNZ406	NUT, LOCK, ZINC, UNF, 3/8"
LWN204	WASHER, SPRING, MEDIUM, PLAIN, 1/4"
LWN205	WASHER, SPRING, MEDIUM, PLAIN, 5/16"
LWN206	WASHER, SPRING, MEDIUM, PLAIN, 3/8"
LWN304	WASHER, SPRING, HEAVY, PLAIN, 1/4"
LWN305	WASHER, SPRING, HEAVY, PLAIN, 5/16"
LWN306	WASHER, SPRING, HEAVY, PLAIN, 3/8"
LWN307	WASHER, SPRING, HEAVY, PLAIN, 7/16"
LWN404	WASHER, SHAKEPROOF, INTERNAL TEETH, PLAIN, 1/4"
LWN405	WASHER, SHAKEPROOF, INTERNAL TEETH, PLAIN, 5/16"
LWZ202	WASHER, SPRING, MEDIUM, ZINC, NO.6
LWZ203	WASHER, SPRING, MEDIUM, ZINC, NO.10
LWZ204	WASHER, SPRING, MEDIUM, ZINC, 1/4"
LWZ205	WASHER, SPRING, MEDIUM, ZINC, 5/16"
LWZ206	WASHER, SPRING, MEDIUM, ZINC, 3/8"
LWZ207	WASHER, SPRING, MEDIUM, ZINC, 7/16"
LWZ208	WASHER, SPRING, MEDIUM, ZINC, 1/2"
LWZ212	WASHER, SPRING, MEDIUM, ZINC, 3/4"

LWZ303	WASHER, SPRING, HEAVY, ZINC, NO.10
LWZ304	WASHER, SPRING, HEAVY, ZINC, 1/4"
LWZ305	WASHER, SPRING, HEAVY, ZINC, 5/16"
LWZ306	WASHER, SPRING, HEAVY, ZINC, 3/8"
LWZ307	WASHER, SPRING, HEAVY, ZINC, 7/17"
LWZ308	WASHER, SPRING, HEAVY, ZINC, 1/2"
LWZ402	WASHER, SHAKEPROOF, INTERNAL TEETH, ZINC, NO.6
LWZ403	WASHER, SHAKEPROOF, INTERNAL TEETH, ZINC, NO.10
LWZ404	WASHER, SHAKEPROOF, INTERNAL TEETH, ZINC, 1/4"
LWZ405	WASHER, SHAKEPROOF, INTERNAL TEETH, ZINC, 5/16"
LWZ408	WASHER, SHAKEPROOF, INTERNAL TEETH, ZINC, 1/2"
LWZ505	WASHER, SHAKEPROOF, EXTERNAL TEETH, ZINC, 5/16"
LWZ510	WASHER, SHAKEPROOF, EXTERNAL TEETH, ZINC, 5/8"
LWZ607	WASHER, SHAKEPROOF, INTERNAL TEETH, ZINC, 7/16"
MNZ206	NUT, HEX,
NCS505	SCREW, 5/16"
NCS612	SCREW, 3/8"
ND606041	NUT, CASTLE, FULL, 3/8"
ND607041	NUT, CASTLE, FULL, 7/16"
ND608041	NUT, CASTLE, FULL, 1/2"
ND609041	NUT, CASTLE, FULL, 9/16"
ND610041	NUT, CASTLE, FULL, 5/8"
NH604041	NUT, HEX, UNF, 1/4"
NH605041	NUT, HEX, UNF, 5/16"
NH606041	NUT, HEX, UNF, 3/8"
NH609041	NUT, PLAIN, FULL, 9/19" UNF X 7/8"
NH610041	NUT, PLAIN, FULL, 5/8" UNF X 15/16"
NH806011	NUT, LOCK, UNC, NO.6
NH910011	NUT, HEX, PLAIN, UNF, 3/16"
NJ2107	NUT, PLAIN, HALF, 1/4"
NL606041	NUT, CASTLE, HALF, 3/8" UNF X 9/16"
NL607041	NUT, CASTLE, HALF, 7/16" UNF X 5/8"
NL607041	NUT, CASTLE, HALF, 7/16"
NL608041	NUT, CASTLE, HALF, 1/2" UNF X 3/4"
NL609041	NUT, CASTLE, HALF, 9/16" UNF X 7/8"
NL610041	NUT, CASTLE, HALF, 5/8" UNF X 15/16"
NQ2707	NUT, CAPTIVE, USE CAGE CN2 OR CN3, 1/4"
NQ2707	NUT, 7/16" AF 1/4"
NQ2708	NUT, CAPTIVE, 5/16"
NQ2708	NUT, 5/8" AF 5/16"
NT504041	NUT, PLAIN, HALF, 1/4" UNC X 7/16"
NT505041	NUT, PLAIN, HALF, 5/16" UNC X 1/2"
NT506041	NUT, PLAIN, HALF, 3/8" UNC X 9/16"
NT604041	NUT, PLAIN, HALF, 1/4" UNF X 7/16"
NT605041	NUT, PLAIN, HALF, 5/16" UNF X 1/2"
NT606041	NUT, PLAIN, HALF, 3/8" UNF X 9/16"
NT607041	NUT, PLAIN, HALF, 7/16" UNF X 5/8"
NT608041	NUT, PLAIN, HALF, 1/2" UNF X 3/4"
NT609041	NUT, PLAIN, HALF, 9/19" UNF X 7/8"
NT610041	NUT, PLAIN, HALF, 5/8" UNF X 15/16"
PCR1007	CLIP, P-CLIP, IMPERIAL, FIXING HOLE, 7/32" CABLE DIA 5/8"
PCR1009	CLIP, P-CLIP, IMPERIAL, FIXING HOLE, 9/32" CABLE DIA 5/8"
PCR1011	CLIP, P-CLIP, IMPERIAL, FIXING HOLE, 11/32" CABLE DIA 5/8"
PCR1207	CLIP, P-CLIP, IMPERIAL, FIXING HOLE, 7/32" CABLE DIA 3/4"
PCR1209	CLIP, P-CLIP, IMPERIAL, FIXING HOLE, 9/32" CABLE DIA 3/4"
PCR1211	CLIP, P-CLIP, IMPERIAL, FIXING HOLE, 11/32" CABLE DIA 3/4"
PCR1407	CLIP, P-CLIP, IMPERIAL, FIXING HOLE, 7/32" CABLE DIA 7/8"
PCR1409	CLIP, P-CLIP, IMPERIAL, FIXING HOLE, 9/32" CABLE DIA 7/8"
PCR1411	CLIP, P-CLIP, IMPERIAL, FIXING HOLE, 11/32" CABLE DIA 7/8"

PCR1607	CLIP, P-CLIP, IMPERIAL, FIXING HOLE, 7/32" CABLE DIA 1"
PCR207	CLIP, P-CLIP, IMPERIAL, FIXING HOLE, 7/32" CABLE DIA 1/8"
PCR307	CLIP, P-CLIP, IMPERIAL, FIXING HOLE, 7/32" CABLE DIA 3/16"
PCR309	CLIP, P-CLIP, IMPERIAL, FIXING HOLE, 9/32" CABLE DIA 3/16"
PCR311	CLIP, P-CLIP, IMPERIAL, FIXING HOLE, 11/32" CABLE DIA 3/16"
PCR407	CLIP, P-CLIP, IMPERIAL, FIXING HOLE, 7/32" CABLE DIA 1/4"
PCR409	CLIP, P-CLIP, IMPERIAL, FIXING HOLE, 9/32" CABLE DIA 1/4"
PCR411	CLIP, P-CLIP, IMPERIAL, FIXING HOLE, 11/32" CABLE DIA 1/4"
PCR507	CLIP, P-CLIP, IMPERIAL, FIXING HOLE, 7/32" CABLE DIA 5/16"
PCR509	CLIP, P-CLIP, IMPERIAL, FIXING HOLE, 9/32" CABLE DIA 5/16"
PCR511	CLIP, P-CLIP, IMPERIAL, FIXING HOLE, 11/32" CABLE DIA 5/16"
PCR607	CLIP, P-CLIP, IMPERIAL, FIXING HOLE, 7/32" CABLE DIA 3/8"
PCR609	CLIP, P-CLIP, IMPERIAL, FIXING HOLE, 9/32" CABLE DIA 3/8"
PCR611	CLIP, P-CLIP, IMPERIAL, FIXING HOLE, 11/32" CABLE DIA 3/8"
PCR707	CLIP, P-CLIP, IMPERIAL, FIXING HOLE, 7/32" CABLE DIA 7/16"
PCR709	CLIP, P-CLIP, IMPERIAL, FIXING HOLE, 9/32" CABLE DIA 7/16"
PCR711	CLIP, P-CLIP, IMPERIAL, FIXING HOLE, 11/32" CABLE DIA 7/16"
PCR807	CLIP, P-CLIP, IMPERIAL, FIXING HOLE, 7/32" CABLE DIA 1/2"
PCR809	CLIP, P-CLIP, IMPERIAL, FIXING HOLE, 9/32" CABLE DIA 1/2"
PCR811	CLIP, P-CLIP, IMPERIAL, FIXING HOLE, 1/32" CABLE DIA 1/2"
PCR813	CLIP, P-CLIP, IMPERIAL, FIXING HOLE, 13/32" CABLE DIA 1/2"
PFS103S	NUT, SPIRE, 3/32"
PFS104S	NUT, SPIRE, 1/8"
PFS105S	NUT, SPIRE, 5/32"
PFS106S	NUT, SPIRE, 3/16"
PJ8504	PIN, CLEVIS, LENGTH IS FROM UNDER HEAD TO END, 3/16" X 3/8"
PMP208	SCREW, CROSS HEAD, PAN HEAD, CHROME, UNF, NO.6 X 1/2"
PMP214	SCREW, CROSS HEAD, PAN HEAD, CHROME, UNF, NO.6 X 7/8"
PMP308	SCREW, CROSS HEAD, PAN HEAD, CHROME, UNF, NO.10 X 1/2"
PMP312	SCREW, CROSS HEAD, PAN HEAD, CHROME, UNF, NO.10 X 3/4"
PMP412	SCREW, CROSS HEAD, PAN HEAD, CHROME, UNF, 1/4" X 3/4"
PMP516	SCREW, CROSS HEAD, PAN HEAD, CHROME, UNF, 5/16" X 1"
PMZ204	SCREW, CROSS HEAD, PAN HEAD, ZINC, UNF, NO.6 X 1/4"
PMZ206	SCREW, CROSS HEAD, PAN HEAD, ZINC, UNF, NO.6 X 3/8"
PMZ208	SCREW, CROSS HEAD, PAN HEAD, ZINC, UNF, NO.6 X 1/2"
PMZ210	SCREW, CROSS HEAD, PAN HEAD, ZINC, UNF, NO.6 X 5/8"
PMZ216	SCREW, CROSS HEAD, PAN HEAD, ZINC, UNF, NO.6 X 1"
PMZ304	SCREW, CROSS HEAD, PAN HEAD, ZINC, UNF, NO.10 X 1/4"
PMZ305	SCREW, CROSS HEAD, PAN HEAD, ZINC, UNF, NO.10 X 5/16"
PMZ306	SCREW, CROSS HEAD, PAN HEAD, ZINC, UNF, NO.10 X 3/8"
PMZ307	SCREW, CROSS HEAD, PAN HEAD, ZINC, UNF, NO.10 X 7/16"
PMZ308	SCREW, CROSS HEAD, PAN HEAD, ZINC, UNF, NO.10 X 1/2"
PMZ310	SCREW, CROSS HEAD, PAN HEAD, ZINC, UNF, NO.10 X 5/8"
PMZ312	SCREW, CROSS HEAD, PAN HEAD, ZINC, UNF, NO.10 X 3/4"
PMZ314	SCREW, CROSS HEAD, PAN HEAD, ZINC, UNF, NO.10 X 7/8"
PMZ316	SCREW, CROSS HEAD, PAN HEAD, ZINC, UNF, NO.10 X 1"
PMZ320	SCREW, CROSS HEAD, PAN HEAD, ZINC, UNF, NO.10 X 1 1/4"
PMZ406	SCREW, CROSS HEAD, PAN HEAD, ZINC, UNF, 1/4" X 3/8"
PMZ408	SCREW, CROSS HEAD, PAN HEAD, ZINC, UNF, 1/4" X 1/2"
PMZ410	SCREW, CROSS HEAD, PAN HEAD, ZINC, UNF, 1/4" X 5/8"
PMZ416	SCREW, CROSS HEAD, PAN HEAD, ZINC, UNF, 1/4" X 1"
PMZ810	SCREW, CROSS HEAD, PAN HEAD, ZINC, UNF, 1/2" X 5/8"
PPZ308	SCREW, CROSS HEAD, PAN HEAD, POINTED, ZINC, UNF, NO.10 X 1/2"
PTP603	SCREW, CROSS HEAD, PAN HEAD, CHROME, UNF, NO.6 X 3/8"
PTP606	
PTZ1003	SCREW, SELF TAP, PAN HEAD No.10 x 3/8"
PTZ1004	SCREW, SELF TAP, PAN HEAD No.10 x 1/2"
PTZ1006	SCREW, SELF TAP, PAN HEAD No.10 x 3/4"
PTZ602	SCREW, CROSS HEAD, ROUND HEAD, SELF TAP, CHROME, No.6 x 1/4"

PTZ603	SCREW, CROSS HEAD, ROUND HEAD, SELF TAP, CHROME, No.6 x 3/8"
PTZ604	SCREW, CROSS HEAD, ROUND HEAD, SELF TAP, CHROME, No.6 x 1/2"
PTZ605	SCREW, CROSS HEAD, ROUND HEAD, SELF TAP, CHROME, No.6 x 5/8"
PTZ606	
PTZ803	SCREW, CROSS HEAD, PAN HEAD, ZINC, UNF, NO.8 X 3/8"
PTZ804	SCREW, CROSS HEAD, PAN HEAD, ZINC, UNF, NO.8 X 1/2"
PTZ805	Screw No. 8 x 5/8"
PTZ806	
PWN105	WASHER, FLAT, STANDARD, PLAIN, 5/16"
PWN106	WASHER, FLAT, STANDARD, PLAIN, 3/8"
PWP204	WASHER, FLAT, LARGE OD, CHROME, 1/4"
PWZ102	WASHER, FLAT, STANDARD, ZINC, NO.6
PWZ103	WASHER, FLAT, STANDARD, ZINC, NO.10
PWZ104	WASHER, FLAT, STANDARD, ZINC, 1/4"
PWZ105	WASHER, FLAT, STANDARD, ZINC, 5/16"
PWZ106	WASHER, FLAT, STANDARD, ZINC, 3/8"
PWZ107	WASHER, FLAT, STANDARD, ZINC, 7/16"
PWZ108	WASHER, FLAT, STANDARD, ZINC, 1"
PWZ110	WASHER, PLAIN, REPAIR, 5/8"
PWZ202	WASHER, FLAT, LARGE OD, ZINC, NO.6
PWZ203	WASHER, FLAT, LARGE OD, ZINC, NO.10
PWZ204	WASHER, FLAT, LARGE OD, ZINC, 1/4"
PWZ205	WASHER, FLAT, LARGE OD, ZINC, 5/16"
PWZ206	WASHER, FLAT, LARGE OD, ZINC, 3/8"
PWZ207	WASHER, FLAT, LARGE OD, ZINC, 7/16"
PWZ208	WASHER, FLAT, LARGE OD, ZINC, 1!
PWZ305	WASHER, FLAT, LARGE OD, ZINC, 5/16" X 7/8"
PWZ306	WASHER, FLAT, LARGE OD, ZINC, 3/8" X 1"
PWZ307	WASHER, FLAT, LARGE OD, ZINC, 7/16" X 1 1/8"
RA607096	RIVET, POP, OPEN END, 2.9mm x 5mm
RA608126	RIVET, POP, OPEN END, 1/8" x 3/16"
RA608176	RIVET, POP, OPEN END, 1/8" x 1/4"
RA608236	RIVET, POP, OPEN END, 1/8" x 5/16"
RA608253	RIVET, POP, OPEN END, 1/8" x 3/8"
RFN207	GROMMET, BLANKING, 7/16
RFN210	GROMMET, BLANKING, 5/8"
RFN303	GROMMET 5/8"OD x 3/16"ID
RFN305	GROMMET 5/8"OD x 5/16"ID Speedo cable
RFN403	GROMMET 5/8"OD X 3/16"ID
RFR503	GROMMET 1"0D X 3/16"
RMP212	SCREW, CSK, RAISED HEAD, CHROME, UNF, NO.6 X 3/4"
RMP214	SCREW, CSK, RAISED HEAD, CHROME, UNF, NO.6 X 7/8"
RMP306	SCREW, CSK, RAISED HEAD, CHROME, UNF, NO.10 X 3/8"
RMP308	SCREW, CSK, RAISED HEAD, CHROME, UNF, NO.10 X 1/2"
RMP310	SCREW, CSK, RAISED HEAD, CHROME, UNF, NO.10 X 3/8"
RMP312	SCREW, CSK, RAISED HEAD, CHROME, UNF, NO.10 X 3/4"
RMP316	SCREW, CSK, RAISED HEAD, CHROME, UNF, NO.10 X 1"
RMP320	SCREW, CSK, RAISED HEAD, CHROME, UNF, NO.10 X 1 1/4"
RMZ204	SCREW, CSK, RAISED HEAD, ZINC, UNF, NO.10 X 1/4"
RMZ308	SCREW, CSK, RAISED HEAD, ZINC, UNF, NO.10 X 1/2"
RMZ310	SCREW, CSK, RAISED HEAD, ZINC, UNF, NO.10 X 5/8"
RU608123	RIVET, POP, CLOSED END, 1/8" x 3/8"
RU608313	RIVET, POP, CLOSED END, 1/8" x 1/2"
RU612123	RIVET, POP, CLOSED END, 3/16" x 5/16"
SE106051	
SE604041	SCREW, PAN, CROSS, ZINC, UNF, 1/4" X 1/2"
SE604051	SCREW, PAN, CROSS, ZINC, UNF, 1/4" X 5/8"
SE604061	SCREW, PAN, CROSS, ZINC, UNF, 1/4" X 3/4"
SE604071	SCREW, PAN, CROSS, ZINC, UNF, 1/4" X 7/8"

SE604081	SCREW, PAN, CROSS, ZINC, UNF, 1/4" X 1"
SE604121	SCREW, PAN, CROSS, ZINC, UNF, 1/4" X 1 1/2"
SE605061	SCREW, PAN, CROSS, ZINC, UNF, 1/4" X 3/4"
SE605081	SCREW, PAN, CROSS, ZINC, UNF, 1/4" X 1"
SF604041	SCREW, PAN, CSK, ZINC, UNF, 1/4" X 1/2"
SF604051	SCREW, PAN, CSK, ZINC, UNF, 1/4" X 5/8"
SF604061	SCREW, PAN, CSK, ZINC, UNF, 1/4" X 3/4"
SF604071	SCREW, PAN, CSK, ZINC, UNF, 1/4" X 7/8"
SF604081	SCREW, PAN, CSK, ZINC, UNF, 1/4" X 1"
SF604083	SCREW, PAN, CSK, ZINC, UNF,
SF604101	SCREW, PAN, CSK, ZINC, UNF,
SF604121	SCREW, PAN, CSK, ZINC, UNF, 1/4" X 1 1/2"
SF605061	SCREW, PAN, CSK, ZINC, UNF, 5/16" X 3/4"
SF605081	SCREW, PAN, CSK, ZINC, UNF, 5/16" X 1"
SG604083	SCREW, RSD HD, CSK, CHROME, UNF, 1/4" X 1"
SG604103	SCREW, RSD HD, CSK, CHROME, UNF, 1/4" X 1 1/4"
SG605061	SCREW, RSD HD, CSK, ZINC, UNF, 5/16" X 3/4"
SH504031	SCREW, SET, HEX HEAD, UNC, 1/4" X 3/8"
SH504041	SCREW, SET, HEX HEAD, UNC, 1/4" X 1/2"
SH504051	SCREW, SET, HEX HEAD, UNC, 1/4" X 5/8"
SH504061	SCREW, SET, HEX HEAD, UNC, 1/4" X 3/4"
SH504071	SCREW, SET, HEX HEAD, UNC, 1/4" X 7/8"
SH504081	SCREW, SET, HEX HEAD, UNC, 1/4" X 1"
SH504091	SCREW, SET, HEX HEAD, UNC, 1/4" X 1 1/8"
SH504101	SCREW, SET, HEX HEAD, UNC, 1/4" X 1 1/4"
SH504111	SCREW, SET, HEX HEAD, UNC, 1/4" X 1 3/8"
SH504121	SCREW, SET, HEX HEAD, UNC, 1/4" X 1 1/2"
SH504141	SCREW, SET, HEX HEAD, UNC, 1/4" X 1 3/4"
SH504181	SCREW, SET, HEX HEAD, UNC, 1/4" X 2 1/4"
SH505031	SCREW, HEX, UNC, 5/16" X 3/8"
SH505041	SCREW, HEX, UNC, 5/16" X 1/2"
SH505051	SCREW, HEX, UNC, 5/16" X 5/8"
SH505061	SCREW, HEX, UNC, 5/16" X 3/4"
SH505071	SCREW, HEX, UNC, 5/16" X 7/8"
SH505081	SCREW, HEX, UNC, 5/16" X 1"
SH505091	SCREW, HEX, UNC, 5/16" X 1 1/8"
SH505101	SCREW, HEX, UNC, 5/16" X 1 1/4"
SH505111	SCREW, HEX, UNC, 5/16" X 1 3/8"
SH505121	SCREW, HEX, UNC, 5/16" X 1 1/2"
SH505141	SCREW, HEX, UNC, 5/16" X 1 3/4"
SH505201	SCREW, HEX, UNC, 5/16" X 2 1/2"
SH506041	SCREW, HEX, UNC, 3/8" X 1/2"
SH506061	SCREW, HEX, UNC, 3/8" X 3/4"
SH506071	SCREW, HEX, UNC, 3/8" X 7/8"
SH506081	SCREW, HEX, UNC, 3/8" X 1"
SH506091	SCREW, HEX, UNC, 3/8" X 1 1/8"
SH506101	SCREW, HEX, UNC, 3/8" X 1 1/4"
SH506111	SCREW, HEX, UNC, 3/8" X 1 3/8"
SH506121	SCREW, HEX, UNC, 3/8" X 1 1/2"
SH506161	SCREW, HEX, UNC, 3/8" X 2"
SH506241	SCREW, HEX, UNC, 3/8" X 3"
SH507091	BOLT, 7/16" UNC X 1 1/8"
SH604031	SCREW, SET, HEX HEAD, UNF, 1/4" X 3/8"
SH604041	SCREW, SET, HEX HEAD, UNF, 1/4" X 1/2"
SH604051	SCREW, SET, HEX HEAD, UNF, 1/4" X 5/8"
SH604061	SCREW, SET, HEX HEAD, UNF, 1/4" X 3/4"
SH604071	SCREW, SET, HEX HEAD, UNF, 1/4" X 7/8"
SH604081	SCREW, SET, HEX HEAD, UNF, 1/4" X 1"
SH604091	SCREW, SET, HEX HEAD, UNF, 1/4" X 1 1/8"

SH604101	SCREW, SET, HEX HEAD, UNF, 1/4" X 1 1/4"
SH604111	SCREW, SET, HEX HEAD, UNF, 1/4" X 1 3/8"
SH604121	SCREW, SET, HEX HEAD, UNF, 1/4" X 1 1/2"
SH604141	SCREW, SET, HEX HEAD, UNF, 1/4" X 1 3/4"
SH604161	SCREW, SET, HEX HEAD, UNF, 1/4" X 2
SH605031	SCREW, SET, HEX HEAD, UNF, 5/16" X 3/8"
SH605041	SCREW, SET, HEX HEAD, UNF, 5/16" X 1/2"
SH605051	SCREW, SET, HEX HEAD, UNF, 5/16" X 5/8"
SH605061	SCREW, SET, HEX HEAD, UNF, 5/16" X 3/4"
SH605071	SCREW, SET, HEX HEAD, UNF, 5/16" X 7/8"
SH605081	SCREW, SET, HEX HEAD, UNF, 5/16" X 1"
SH605091	SCREW, SET, HEX HEAD, UNF, 5/16" X 1 1/8"
SH605096	
SH605101	SCREW, SET, HEX HEAD, UNF, 5/16" X 1 1/4"
SH605111	SCREW, SET, HEX HEAD, UNF, 5/16" X 1 3/8"
SH605121	SCREW, SET, HEX HEAD, UNF, 5/16" X 1 1/2"
SH605141	SCREW, SET, HEX HEAD, UNF, 5/16" X 1 3/4"
SH605151	SCREW, SET, HEX HEAD, UNF, 5/16" X 1 7/8"
SH605161	SCREW, SET, HEX HEAD, UNF, 5/16" X 2"
SH605181	SCREW, SET, HEX HEAD, UNF, 5/16" X 2 1/4"
SH605201	SCREW, SET, HEX HEAD, UNF, 5/16" X 2 1/2"
SH605221	SCREW, SET, HEX HEAD, UNF, 5/16" X 2 3/4"
SH605241	SCREW, SET, HEX HEAD, UNF, 5/16" X 3"
SH606031	SCREW, SET, HEX HEAD, UNF, 3/8" X 3/8"
SH606041	SCREW, SET, HEX HEAD, UNF, 3/8" X 1/2"
SH606051	SCREW, SET, HEX HEAD, UNF, 3/8" X 5/8"
SH606061	SCREW, SET, HEX HEAD, UNF, 3/8" X 3/4"
SH606071	SCREW, SET, HEX HEAD, UNF, 3/8" X 7/8"
SH606081	SCREW, SET, HEX HEAD, UNF, 3/8" X 1"
SH606091	SCREW, SET, HEX HEAD, UNF, 3/8" X 1 1/8"
SH606101	SCREW, SET, HEX HEAD, UNF, 3/8" X 1 1/4"
SH606111	SCREW, SET, HEX HEAD, UNF, 3/8" X 1 3/8"
SH606121	SCREW, SET, HEX HEAD, UNF, 3/8" X 1 1/2"
SH606141	SCREW, SET, HEX HEAD, UNF, 3/8" X 1 3/4"
SH606161	SCREW, SET, HEX HEAD, UNF, 3/8" X 2"
SH606181	SCREW, SET, HEX HEAD, UNF, 3/8" X 2 1/4"
SH606201	SCREW, SET, HEX HEAD, UNF, 3/8" X 2 1/2"
SH607051	SCREW, SET, HEX HEAD, UNF, 7/16" X 5/8"
SH607061	SCREW, SET, HEX HEAD, UNF, 7/16" X 3/4"
SH607071	SCREW, SET, HEX HEAD, UNF, 7/16" X 7/8"
SH607081	SCREW, SET, HEX HEAD, UNF, 7/16" X 1"
SH607091	SCREW, SET, HEX HEAD, UNF, 7/16" X 1 1/8"
SH607101	SCREW, SET, HEX HEAD, UNF, 7/16" X 1 1/4"
SH607111	SCREW, SET, HEX HEAD, UNF, 7/16" X 1 3/8"
SH607121	SCREW, SET, HEX HEAD, UNF, 7/16" X 1 1/2"
SH607141	SCREW, SET, HEX HEAD, UNF, 7/16" X 1 3/4"
SH607161	SCREW, SET, HEX HEAD, UNF, 7/16" X 2"
SH607181	SCREW, SET, HEX HEAD, UNF, 7/16" X 2 1/4"
SH608041	SCREW, SET, HEX HEAD, UNF, 1/2" X 1/2" S
SH608051	SCREW, SET, HEX HEAD, UNF, 1/2" X 5/8" S
SH608081	SCREW, SET, HEX HEAD, UNF, 1/2" X 1" SH6
SH608121	SCREW, SET, HEX HEAD, UNF, 1/2" X 1 1/2"
SH608141	SCREW, SET, HEX HEAD, UNF, 1/2" X 1 3/4"
SH608201	SCREW, SET, HEX HEAD, UNF, 1/2" X 2 1/2"
SH610111	BOLT, 7/16" UNC X 1 1/4"
SU2A	NUT, BRAKE/CLUTCH/FUEL PIPE, FEMALE, STEEL, 10mm x 1mm PIPE DIA 3/16"
SU4A	NUT, BRAKE/CLUTCH/FUEL PIPE, FEMALE, STEEL, 7/16" UNF PIPE DIA 1/4"
TE504081	STUD, UNF ONE END UNC THE OTHER, 1/4" X 1"
TE504131	STUD, UNF ONE END UNC THE OTHER, 1/4" X 1 5/8"

TE505091	STUD, UNF ONE END UNC THE OTHER, 5/16" X 1 1/8"
TE505111	STUD, UNF ONE END UNC THE OTHER, 5/16" X 1 3/8"
TE505121	STUD, UNF ONE END UNC THE OTHER, 5/16" X 1 1/2"
TE505131	STUD, UNF ONE END UNC THE OTHER, 5/16" X 1 5/8"
TE505141	STUD, UNF ONE END UNC THE OTHER, 5/16" X 1 3/4"
TE505151	STUD, UNF ONE END UNC THE OTHER, 5/16" X 1 7/8"
TE505161	STUD, UNF ONE END UNC THE OTHER, 5/16" X 2"
TE505181	STUD, UNF ONE END UNC THE OTHER, 5/16" X 2 1/4"
TE505201	STUD, UNF ONE END UNC THE OTHER, 5/16" X 2 1/2"
TE505221	STUD, UNF ONE END UNC THE OTHER, 5/16" X 2 3/4"
TE505241	STUD, UNF ONE END UNC THE OTHER, 5/16" X 3"
TE505261	STUD, UNF ONE END UNC THE OTHER, 5/16" X 3 1/4"
TE505271	STUD, UNF ONE END UNC THE OTHER, 5/16" X 3 3/8"
TE505281	STUD, UNF ONE END UNC THE OTHER, 5/16" X 3 1/2"
TE505341	STUD, UNF ONE END UNC THE OTHER, 5/16" X 4 1/4"
TE506101	STUD, UNF ONE END UNC THE OTHER, 3/8" X 1 5/16"
TE506131	STUD, UNF ONE END UNC THE OTHER, 3/8" X 1 5/8"
TE506141	STUD, UNF ONE END UNC THE OTHER, 3/8" X 1 3/4"
TE506161	STUD, UNF ONE END UNC THE OTHER, 3/8" X 2"
TE506201	STUD, UNF ONE END UNC THE OTHER, 3/8" X 2 1/2"
TE506361	STUD, UNF ONE END UNC THE OTHER, 3/8" X 3 1/2"
TE604081	STUD, UNF BOTH ENDS, 1/4" X 1"
TE604091	STUD, UNF BOTH ENDS, 1/4" X 1 1/8"
TE604101	STUD, UNF BOTH ENDS, 1/4" X 1 1/4"
TE605101	STUD, UNF BOTH ENDS, 5/16" X 1 1/4"
TE605111	STUD, UNF BOTH ENDS, 5/16" X 1 3/8"
TE605121	STUD, UNF BOTH ENDS, 5/16" X 1 1/2"
TE605131	STUD, UNF BOTH ENDS, 5/16" X 1 5/8"
TE605141	STUD, UNF BOTH ENDS, 5/16" X 1 3/4"
TE605151	STUD, UNF BOTH ENDS, 5/16" X 1 7/8"
TE605181	STUD, UNF BOTH ENDS, 5/16" X 2 1/4"
TE605201	STUD, UNF BOTH ENDS, 5/16" X 2 1/2"
TE605221	STUD, UNF BOTH ENDS, 5/16" X 2 3/4"
TE605251	STUD, UNF BOTH ENDS, 5/16" X 3 1/8"
TE605291	STUD, UNF BOTH ENDS, 5/16" X 3 5/8"
TE606101	STUD, UNF BOTH ENDS, 3/8" X 1 1/4"
TE606111	STUD, UNF BOTH ENDS, 3/8" X 1 3/8"
TE606121	STUD, UNF BOTH ENDS, 3/8" X 1 1/2"
TE606141	STUD, UNF BOTH ENDS, 3/8" X 1 3/4"
TE606151	STUD, UNF BOTH ENDS, 3/8" X 1 7/8"
TM110051	NUT, BRAKE/CLUTCH/FUEL PIPE, MALE, STEEL, 10mm x 1mm PIPE DIA 3/16"
TM606031	NUT, BRAKE/CLUTCH/FUEL PIPE, MALE, STEEL, 3/8" UNF PIPE DIA 3/16"
TN3208	NUT, NYLOC, HALF, 5/16"
TN3209	NUT, NYLOC, HALF, 3/8"
TN3210	NUT, NYLOC, HALF, 7/16"
TN3211	NUT, NYLOC, HALF, 1/2"
TN3212	NUT, NYLOC, HALF, 9/16" UNF
TN3212	NUT, NYLOC, HALF, 9/16"
TN3213	NUT, NYLOC, HALF, 5/8"
TN606031	NUT, BRAKE/CLUTCH/FUEL PIPE, FEMALE, STEEL, 3/8" UNF PIPE DIA 3/16"
UHN400	NIPPLE, GREASE, STRAIGHT, SHORT, 1/8" BSP
UHN445	NIPPLE, GREASE, 45 DEGREE, 1/8" BSP
WE600041	WASHER, SHAKEPROOF, EXTERNAL STAR, 1/4"
WE600051	WASHER, SHAKEPROOF, EXTERNAL STAR, 5/16"
WE600061	WASHER, SHAKEPROOF, EXTERNAL STAR, 3/8"
WE600071	WASHER, SHAKEPROOF, EXTERNAL STAR, 7/16"
WE600081	WASHER, SHAKEPROOF, EXTERNAL STAR, 1/2"
WE600101	WASHER, SHAKEPROOF, EXTERNAL STAR, 5/8"
WE702101	WASHER, SHAKEPROOF, EXTERNAL STAR, 3/16"

WE704061	WASHER, SHAKEPROOF, EXTERNAL STAR, No. 6
WF505	WASHER, SEALING, FIBRE, 3/16"
WF600041	WASHER, SHAKEPROOF, INTERNAL STAR, 1/4"
WF600051	WASHER, SHAKEPROOF, INTERNAL STAR, 5/16"
WF600061	WASHER, SHAKEPROOF, INTERNAL STAR, 3/8"
WF600071	WASHER, SHAKEPROOF, INTERNAL STAR, 7/16"
WF600081	WASHER, SHAKEPROOF, INTERNAL STAR, 1/2"
WF600091	WASHER, SHAKEPROOF, INTERNAL STAR, 9/16"
WF600101	WASHER, SHAKEPROOF, INTERNAL STAR, 5/8"
WF702101	WASHER, SHAKEPROOF, INTERNAL STAR, 3/16"
WF704061	WASHER, SHAKEPROOF, INTERNAL STAR, No. 6
WL700061	WASHER, SPRING, SINGLE COIL, No.6
WL700081	WASHER, SPRING, SINGLE COIL, No.8
WL700101	WASHER, SPRING, SINGLE COIL, 3/16"
WM69	WASHER, PLAIN, REPAIR, 7/16"
WP105	WASHER, PLAIN, REPAIR, 5/16"
WP12	WASHER, PLAIN, REPAIR, 9/16"
WP120	WASHER, PLAIN, REPAIR, 1/4"
WP130	WASHER, PLAIN, REPAIR, 3/8"
WP3	WASHER, PLAIN, REPAIR, NO.6
WP4	WASHER, PLAIN, REPAIR, NO.8
WP5	WASHER, PLAIN, REPAIR, 3/16"
YN2905	NUT, NYLOCK, FULL, 3/16"
YN2907	NUT, NYLOCK, FULL, 1/4"
YN2908	NUT, NYLOCK, FULL, 5/16"
YN2909	NUT, NYLOCK, FULL, 3/8"
YN2910	NUT, NYLOCK, FULL, 7/16"
YN2911	NUT, NYLOCK, FULL, 1/2"
YN2912	NUT, NYLOCK, FULL, 9/16"
YN2913	NUT, NYLOCK, FULL, 5/8"
ZCS505	SCREW, SET, HIGH TENSILE, UNC, 5/16" X 5/8"
ZCS507	SCREW, SET, HIGH TENSILE, UNC, 5/16" X 7/8"
ZCS508	SCREW, SET, HIGH TENSILE, UNC, 5/16" X 1"
ZCS610	SCREW, SET, HIGH TENSILE, UNC, 3/8" X 1 1/4"

Description to Part Number

AD606061	
HZS126	
PTP606	
PTZ606	
PTZ806	
SE106051	
SH605096	
BLS108	BALL, STEEL, 1/4"
BLS106	BALL, STEEL, 3/16"
BLS112	BALL, STEEL, 3/8"
BLS110	BALL, STEEL, 5/16"
BLS28	BALL, STEEL, 7/16"
SH610111	BOLT, 7/16" UNC X 1 1/4"
SH507091	BOLT, 7/16" UNC X 1 1/8"
C5192A	BOLT, BANJO, UNF3/8"
BH504121	BOLT, HEX HEAD, UNC, 1/4" X 1 1/2"
BH504091	BOLT, HEX HEAD, UNC, 1/4" X 1 1/8"
BH504141	BOLT, HEX HEAD, UNC, 1/4" X 1 3/4"
BH504111	BOLT, HEX HEAD, UNC, 1/4" X 1 3/8"
BH504201	BOLT, HEX HEAD, UNC, 1/4" X 2 1/2"
BH504181	BOLT, HEX HEAD, UNC, 1/4" X 2 1/4"
BH504161	BOLT, HEX HEAD, UNC, 1/4" X 2"
H CZ824	BOLT, HEX HEAD, UNC, ZINC, 1/2" X 3"

HCZ613	BOLT, HEX HEAD, UNC, ZINC, 3/8" X 1 5/8"
HCZ608	BOLT, HEX HEAD, UNC, ZINC, 3/8" X 1"
HCZ518	BOLT, HEX HEAD, UNC, ZINC, 5/16" X 2 1/4"
BH608141	BOLT, HEX HEAD, UNF, 1/2" X 1 3/4"
BH608201	BOLT, HEX HEAD, UNF, 1/2" X 2 1/2"
BH608181	BOLT, HEX HEAD, UNF, 1/2" X 2 1/4"
BH608161	BOLT, HEX HEAD, UNF, 1/2" X 2"
BH608241	BOLT, HEX HEAD, UNF, 1/2" X 3"
BH604121	BOLT, HEX HEAD, UNF, 1/4" X 1 1/2"
BH604101	BOLT, HEX HEAD, UNF, 1/4" X 1 1/4"
BH604091	BOLT, HEX HEAD, UNF, 1/4" X 1 1/8"
BH604141	BOLT, HEX HEAD, UNF, 1/4" X 1 3/4"
BH604111	BOLT, HEX HEAD, UNF, 1/4" X 1 3/8"
BH604081	BOLT, HEX HEAD, UNF, 1/4" X 1"
BH604161	BOLT, HEX HEAD, UNF, 1/4" X 2
BH604201	BOLT, HEX HEAD, UNF, 1/4" X 2 1/2"
BH604181	BOLT, HEX HEAD, UNF, 1/4" X 2 1/4"
BH604221	BOLT, HEX HEAD, UNF, 1/4" X 2 3/4"
BH604241	BOLT, HEX HEAD, UNF, 1/4" X 3
BH606121	BOLT, HEX HEAD, UNF, 3/8" X 1 1/2"
BH606101	BOLT, HEX HEAD, UNF, 3/8" X 1 1/4"
BH606091	BOLT, HEX HEAD, UNF, 3/8" X 1 1/8"
BH606141	BOLT, HEX HEAD, UNF, 3/8" X 1 3/4"
BH606111	BOLT, HEX HEAD, UNF, 3/8" X 1 3/8"
BH606081	BOLT, HEX HEAD, UNF, 3/8" X 1"
BH606201	BOLT, HEX HEAD, UNF, 3/8" X 2 1/2"
BH606181	BOLT, HEX HEAD, UNF, 3/8" X 2 1/4"
BH606221	BOLT, HEX HEAD, UNF, 3/8" X 2 3/4"
BH606161	BOLT, HEX HEAD, UNF, 3/8" X 2"
BH606281	BOLT, HEX HEAD, UNF, 3/8" X 3 1/2"
BH606261	BOLT, HEX HEAD, UNF, 3/8" X 3 1/4"
BH606301	BOLT, HEX HEAD, UNF, 3/8" X 3 3/4"
BH606241	BOLT, HEX HEAD, UNF, 3/8" X 3"
BH606321	BOLT, HEX HEAD, UNF, 3/8" X 4"
BH605121	BOLT, HEX HEAD, UNF, 5/16" X 1 1/2"
BH605101	BOLT, HEX HEAD, UNF, 5/16" X 1 1/4"
BH605091	BOLT, HEX HEAD, UNF, 5/16" X 1 1/8"
BH605141	BOLT, HEX HEAD, UNF, 5/16" X 1 3/4"
BH605111	BOLT, HEX HEAD, UNF, 5/16" X 1 3/8"
BH605151	BOLT, HEX HEAD, UNF, 5/16" X 1 7/8"
BH605201	BOLT, HEX HEAD, UNF, 5/16" X 2 1/2"
BH605181	BOLT, HEX HEAD, UNF, 5/16" X 2 1/4"
BH605221	BOLT, HEX HEAD, UNF, 5/16" X 2 3/4"
BH605191	BOLT, HEX HEAD, UNF, 5/16" X 2 3/8"
BH605161	BOLT, HEX HEAD, UNF, 5/16" X 2"
BH605281	BOLT, HEX HEAD, UNF, 5/16" X 3 1/2"
BH605261	BOLT, HEX HEAD, UNF, 5/16" X 3 1/4"
BH605241	BOLT, HEX HEAD, UNF, 5/16" X 3"
BH605401	BOLT, HEX HEAD, UNF, 5/16" X 5"
BH607121	BOLT, HEX HEAD, UNF, 7/16" X 1 1/2"
BH607141	BOLT, HEX HEAD, UNF, 7/16" X 1 3/4"
BH607201	BOLT, HEX HEAD, UNF, 7/16" X 2 1/2"
BH607181	BOLT, HEX HEAD, UNF, 7/16" X 2 1/4"
BH607161	BOLT, HEX HEAD, UNF, 7/16" X 2"
BH607281	BOLT, HEX HEAD, UNF, 7/16" X 3 1/2"
BH607241	BOLT, HEX HEAD, UNF, 7/16" X 3"
HBN412	BOLT, HEX HEAD, UNF, PLAIN, 1/4" X 1 1/2"
HBZ408	BOLT, HEX HEAD, UNF, ZINC, 1/4" X 1"
HBZ418	BOLT, HEX HEAD, UNF, ZINC, 1/4" X 2 1/4"

HBZ422	BOLT, HEX HEAD, UNF, ZINC, 1/4" X 2 3/4"
HBZ612	BOLT, HEX HEAD, UNF, ZINC, 3/8" X 1 1/2"
HBZ614	BOLT, HEX HEAD, UNF, ZINC, 3/8" X 1 3/4"
HBZ616	BOLT, HEX HEAD, UNF, ZINC, 3/8" X 2"
HBZ632	BOLT, HEX HEAD, UNF, ZINC, 3/8" X 4"
HBZ512	BOLT, HEX HEAD, UNF, ZINC, 5/16" X 1 1/2"
HBZ510	BOLT, HEX HEAD, UNF, ZINC, 5/16" X 1 1/4"
HBZ514	BOLT, HEX HEAD, UNF, ZINC, 5/16" X 1 3/4"
HBZ511	BOLT, HEX HEAD, UNF, ZINC, 5/16" X 1 3/8"
HBZ513	BOLT, HEX HEAD, UNF, ZINC, 5/16" X 1 5/8"
HBZ515	BOLT, HEX HEAD, UNF, ZINC, 5/16" X 1 7/8"
HBZ520	BOLT, HEX HEAD, UNF, ZINC, 5/16" X 2 1/2"
HBZ518	BOLT, HEX HEAD, UNF, ZINC, 5/16" X 2 1/4"
HBZ522	BOLT, HEX HEAD, UNF, ZINC, 5/16" X 2 3/4"
HBZ516	BOLT, HEX HEAD, UNF, ZINC, 5/16" X 2"
HBZ528	BOLT, HEX HEAD, UNF, ZINC, 5/16" X 3 1/2"
HBZ526	BOLT, HEX HEAD, UNF, ZINC, 5/16" X 3 1/4"
HBZ524	BOLT, HEX HEAD, UNF, ZINC, 5/16" X 3"
HBZ726	BOLT, HEX HEAD, UNF, ZINC, 7/16" X 3 1/4"
HBZ732	BOLT, HEX HEAD, UNF, ZINC, 7/16" X 4"
BH506121	BOLT, HEX, UNC, 3/8" X 1 1/2"
BH506141	BOLT, HEX, UNC, 3/8" X 1 3/4"
BH506111	BOLT, HEX, UNC, 3/8" X 1 3/8"
BH506081	BOLT, HEX, UNC, 3/8" X 1"
BH506201	BOLT, HEX, UNC, 3/8" X 2 1/2"
BH506181	BOLT, HEX, UNC, 3/8" X 2 1/4"
BH506161	BOLT, HEX, UNC, 3/8" X 2"
BH506241	BOLT, HEX, UNC, 3/8" X 3"
BH505121	BOLT, HEX, UNC, 5/16" X 1 1/2"
BH505101	BOLT, HEX, UNC, 5/16" X 1 1/4"
BH505141	BOLT, HEX, UNC, 5/16" X 1 3/4"
BH505111	BOLT, HEX, UNC, 5/16" X 1 3/8"
BH505201	BOLT, HEX, UNC, 5/16" X 2 1/2"
BH505181	BOLT, HEX, UNC, 5/16" X 2 1/4"
BH505161	BOLT, HEX, UNC, 5/16" X 2"
BH505241	BOLT, HEX, UNC, 5/16" X 3"
GHF106	BOLT, UNF, 3/8" X 1 1/2"
GHF105	BOLT, UNF, 3/8" X 1" (shorter of the two starter motor mounting bolts)
GHF104	BOLT, UNF, 5/16" X 1 1/2"
AHH7921.	BUSH, ANTIROLLBAR MOUNTING, 11/16"
1B4526.	BUSH, ANTIROLLBAR MOUNTING, 5/8"
AHH6541.	BUSH, ANTIROLLBAR MOUNTING, 9/16"
CN3	CAGE, CAPTIVE NUT, OBLONG, 7/16" AF
600032	CAGE, CAPTIVE NUT, SQUARE, 1/2" AF
CN2	CAGE, CAPTIVE NUT, SQUARE, 7/16" AF
BMK385	CLIP, FUEL PIPE, 1/4"
17H1595	CLIP, HEATERBOX, 3"
GHC10410	CLIP, HOSE, JUBILEE, STAINLESS, 12-18mm
GHC10412	CLIP, HOSE, JUBILEE, STAINLESS, 12-20mm
GHC10413	CLIP, HOSE, JUBILEE, STAINLESS, 16-25mm
GHC10414	CLIP, HOSE, JUBILEE, STAINLESS, 20-32mm
GHC10415	CLIP, HOSE, JUBILEE, STAINLESS, 25-40mm
GHC10416	CLIP, HOSE, JUBILEE, STAINLESS, 32-50mm
GHC10417	CLIP, HOSE, JUBILEE, STAINLESS, 46-60mm
GHC10418	CLIP, HOSE, JUBILEE, STAINLESS, 50-70mm
GHC10419	CLIP, HOSE, JUBILEE, STAINLESS, 60-80mm
GHC10420	CLIP, HOSE, JUBILEE, STAINLESS, 70-90mm
GHC10421	CLIP, HOSE, JUBILEE, STAINLESS, 80-100mm
GHC10408	CLIP, HOSE, JUBILEE, STAINLESS, 8-12mm

GHC10411	CLIP, HOSE, JUBILEE, STAINLESS, 8-16mm
GHC1217	CLIP, HOSE, JUBILEE, STEEL, 1 1/2" - 2 1/4"
GHC913	CLIP, HOSE, JUBILEE, STEEL, 1 1/8" - 1 5/8"
GHC1015	CLIP, HOSE, JUBILEE, STEEL, 1 3/8" - 2"
GHC811	CLIP, HOSE, JUBILEE, STEEL, 1" - 1 3/8"
GHC406	CLIP, HOSE, JUBILEE, STEEL, 1/2" - 3/4"
GHC2228	CLIP, HOSE, JUBILEE, STEEL, 2 3/4" - 3 1/2"
GHC1622	CLIP, HOSE, JUBILEE, STEEL, 2" - 2 3/4"
GHC2632	CLIP, HOSE, JUBILEE, STEEL, 3 1/4" - 4"
GHC3036	CLIP, HOSE, JUBILEE, STEEL, 3 3/4" - 4 1/2"
GHC608	CLIP, HOSE, JUBILEE, STEEL, 3/4" - 1"
GHC304	CLIP, HOSE, JUBILEE, STEEL, 3/8" - 1/2"
GHC3340	CLIP, HOSE, JUBILEE, STEEL, 4 1/8" - 5"
GHC709	CLIP, HOSE, JUBILEE, STEEL, 5/8" - 1 1/8"
GHC507	CLIP, HOSE, JUBILEE, STEEL, 5/8" - 7/8"
GHC405	CLIP, HOSE, JUBILEE, STEEL, 7/16" - 5/8"
CS4023	CLIP, HOSE, WIRE, 1 1/4" - 1 7/16"
CS4022	CLIP, HOSE, WIRE, 1 1/8" - 1 3/8"
CS4030	CLIP, HOSE, WIRE, 1 11/16" - 1 7/8"
CS4034	CLIP, HOSE, WIRE, 1 15/16" - 2 1/8"
CS4025	CLIP, HOSE, WIRE, 1 3/8" - 1 9/16"
CS4024	CLIP, HOSE, WIRE, 1 5/16" - 1 1/2"
CS4029	CLIP, HOSE, WIRE, 1 5/8" - 1 13/16"
CS4026	CLIP, HOSE, WIRE, 1 7/16" - 1 5/8"
CS4032	CLIP, HOSE, WIRE, 1 7/8" - 2"
CS4028	CLIP, HOSE, WIRE, 1 9/16" - 1 3/4"
CS4020	CLIP, HOSE, WIRE, 1" - 1 1/4"
CS4011	CLIP, HOSE, WIRE, 1/2" - 11/16"
CS4014	CLIP, HOSE, WIRE, 11/16" - 7/8"
CS4017	CLIP, HOSE, WIRE, 13/16" - 1 1/16"
CS4036	CLIP, HOSE, WIRE, 2 1/16" - 2 1/4"
CS4039	CLIP, HOSE, WIRE, 2 1/4" - 2 7/16"
CS4037	CLIP, HOSE, WIRE, 2 1/8" - 2 5/16"
CS4048	CLIP, HOSE, WIRE, 2 13/16" - 3"
CS4038	CLIP, HOSE, WIRE, 2 3/16" - 2 7/16"
CS4041	CLIP, HOSE, WIRE, 2 3/8" - 2 9/16"
CS4040	CLIP, HOSE, WIRE, 2 5/16" - 2 1/2"
CS4042	CLIP, HOSE, WIRE, 2 7/16" - 2 5/8"
CS4052	CLIP, HOSE, WIRE, 3 1/16" - 3 1/4"
CS4064	CLIP, HOSE, WIRE, 3 13/16" - 4"
CS4016	CLIP, HOSE, WIRE, 3/4" - 1"
CS4013	CLIP, HOSE, WIRE, 5/8" - 13/16"
CS4009	CLIP, HOSE, WIRE, 7/16" - 9/16"
CS4018	CLIP, HOSE, WIRE, 7/8" - 1 1/8"
CS4012	CLIP, HOSE, WIRE, 9/16" - 3/4"
PCR811	CLIP, P-CLIP, IMPERIAL, FIXING HOLE, 1/32" CABLE DIA 1/2"
PCR411	CLIP, P-CLIP, IMPERIAL, FIXING HOLE, 11/32" CABLE DIA 1/4"
PCR311	CLIP, P-CLIP, IMPERIAL, FIXING HOLE, 11/32" CABLE DIA 3/16"
PCR1211	CLIP, P-CLIP, IMPERIAL, FIXING HOLE, 11/32" CABLE DIA 3/4"
PCR611	CLIP, P-CLIP, IMPERIAL, FIXING HOLE, 11/32" CABLE DIA 3/8"
PCR511	CLIP, P-CLIP, IMPERIAL, FIXING HOLE, 11/32" CABLE DIA 5/16"
PCR1011	CLIP, P-CLIP, IMPERIAL, FIXING HOLE, 11/32" CABLE DIA 5/8"
PCR711	CLIP, P-CLIP, IMPERIAL, FIXING HOLE, 11/32" CABLE DIA 7/16"
PCR1411	CLIP, P-CLIP, IMPERIAL, FIXING HOLE, 11/32" CABLE DIA 7/8"
PCR813	CLIP, P-CLIP, IMPERIAL, FIXING HOLE, 13/32" CABLE DIA 1/2"
PCR1607	CLIP, P-CLIP, IMPERIAL, FIXING HOLE, 7/32" CABLE DIA 1"
PCR807	CLIP, P-CLIP, IMPERIAL, FIXING HOLE, 7/32" CABLE DIA 1/2"
PCR407	CLIP, P-CLIP, IMPERIAL, FIXING HOLE, 7/32" CABLE DIA 1/4"
PCR207	CLIP, P-CLIP, IMPERIAL, FIXING HOLE, 7/32" CABLE DIA 1/8"

PCR307	CLIP, P-CLIP, IMPERIAL, FIXING HOLE, 7/32" CABLE DIA 3/16"
PCR1207	CLIP, P-CLIP, IMPERIAL, FIXING HOLE, 7/32" CABLE DIA 3/4"
PCR607	CLIP, P-CLIP, IMPERIAL, FIXING HOLE, 7/32" CABLE DIA 3/8"
PCR507	CLIP, P-CLIP, IMPERIAL, FIXING HOLE, 7/32" CABLE DIA 5/16"
PCR1007	CLIP, P-CLIP, IMPERIAL, FIXING HOLE, 7/32" CABLE DIA 5/8"
PCR707	CLIP, P-CLIP, IMPERIAL, FIXING HOLE, 7/32" CABLE DIA 7/16"
PCR1407	CLIP, P-CLIP, IMPERIAL, FIXING HOLE, 7/32" CABLE DIA 7/8"
PCR809	CLIP, P-CLIP, IMPERIAL, FIXING HOLE, 9/32" CABLE DIA 1/2"
PCR409	CLIP, P-CLIP, IMPERIAL, FIXING HOLE, 9/32" CABLE DIA 1/4"
PCR309	CLIP, P-CLIP, IMPERIAL, FIXING HOLE, 9/32" CABLE DIA 3/16"
PCR1209	CLIP, P-CLIP, IMPERIAL, FIXING HOLE, 9/32" CABLE DIA 3/4"
PCR609	CLIP, P-CLIP, IMPERIAL, FIXING HOLE, 9/32" CABLE DIA 3/8"
PCR509	CLIP, P-CLIP, IMPERIAL, FIXING HOLE, 9/32" CABLE DIA 5/16"
PCR1009	CLIP, P-CLIP, IMPERIAL, FIXING HOLE, 9/32" CABLE DIA 5/8"
PCR709	CLIP, P-CLIP, IMPERIAL, FIXING HOLE, 9/32" CABLE DIA 7/16"
PCR1409	CLIP, P-CLIP, IMPERIAL, FIXING HOLE, 9/32" CABLE DIA 7/8"
CP105081	CLIP, P-CLIP, METRIC, FIXING HOLE, 5mm CABLE DIA 8mm
CP106161	CLIP, P-CLIP, METRIC, FIXING HOLE, 6mm CABLE DIA 16mm
CP108101	CLIP, P-CLIP, METRIC, FIXING HOLE, 8mm CABLE DIA 10mm
CP108121	CLIP, P-CLIP, METRIC, FIXING HOLE, 8mm CABLE DIA 12mm
CP108165	CLIP, P-CLIP, METRIC, FIXING HOLE, 8mm CABLE DIA 16mm
GGT1110X	CLIP, PETROL PIPE, ENOT, 10mm
GGT1111X	CLIP, PETROL PIPE, ENOT, 11mm
GGT1112X	CLIP, PETROL PIPE, ENOT, 12mm
GGT1113X	CLIP, PETROL PIPE, ENOT, 13mm
GGT1114X	CLIP, PETROL PIPE, ENOT, 14mm
GGT1115X	CLIP, PETROL PIPE, ENOT, 15mm
GGT1116X	CLIP, PETROL PIPE, ENOT, 16mm
GGT1117X	CLIP, PETROL PIPE, ENOT, 17mm
GGT1108X	CLIP, PETROL PIPE, ENOT, 8mm
GGT1109X	CLIP, PETROL PIPE, ENOT, 9mm
624155	CLIP, PIPE, Double, 3/16"
GHF1192	CLIP, PIPE, Single, 1/4"
GHF1191	CLIP, PIPE, Single, 3/16"
DP408	DOWEL, 1/4" X 1/2"
DP411	DOWEL, 1/4" X 11/16"
DP410	DOWEL, 1/4" X 5/8"
DP407	DOWEL, 1/4" X 7/16"
DP414	DOWEL, 1/4" X 7/8"
DP204	DOWEL, 1/8" X 1/4"
DP205	DOWEL, 1/8" X 5/16"
DP306	DOWEL, 3/16" X 3/8"
DP619	DOWEL, 3/8" X 1 3/16"
DP608	DOWEL, 3/8" X 1/2"
DP610	DOWEL, 3/8" X 5/8"
DP508	DOWEL, 5/16" X 1/2"
DP514	DOWEL, 5/16" X 7/8"
ACB8474	GROMMET speedo cable
RFR503	GROMMET 1"OD X 3/16"
5L62	GROMMET 1"OD x 1/8"ID
5L489	GROMMET 1-3/4 INCH
RFN303	GROMMET 5/8"OD x 3/16"ID
RFN305	GROMMET 5/8"OD x 5/16"ID Speedo cable
RFN403	GROMMET 5/8"OD X 3/16"ID
3H822	GROMMET, 3/4"OD x 1/2"ID
14A7033	GROMMET, 5/8"OD x 3/16"ID
RFN210	GROMMET, BLANKING, 5/8"
RFN207	GROMMET, BLANKING, 7/16"
CFP1000	GROMMET, BLANKING, PLASTIC, 1"

CFP500	GROMMET, BLANKING, PLASTIC, 1/2"
CFP750	GROMMET, BLANKING, PLASTIC, 3/4"
CFP375	GROMMET, BLANKING, PLASTIC, 3/8"
CFP625	GROMMET, BLANKING, PLASTIC, 5/8"
2H2065	GROMMET, WIRING, 1-5/8" x 5/8"
125361	NIPPLE, GREASE, 45 DEGREE, 1/4" BSP
UHN445	NIPPLE, GREASE, 45 DEGREE, 1/8" BSP
56934	NIPPLE, GREASE, 90 DEGREE, 1/4" BSP
LN30041	NIPPLE, GREASE, 90 DEGREE, 1/8" BSP
56935	NIPPLE, GREASE, STRAIGHT, 1/4" BSP
144825	NIPPLE, GREASE, STRAIGHT, LONG, 1/8" BSP
UHN400	NIPPLE, GREASE, STRAIGHT, SHORT, 1/8" BSP
GHF211	NUT M4 METRIC
NQ2708	NUT, 5/8" AF 5/16"
NQ2707	NUT, 7/16" AF 1/4"
AEHU2A	NUT, BRAKE/CLUTCH/FUEL PIPE, FEMALE, BRASS, 10mm x 1mm PIPE DIA 3/16"
AEHU1A	NUT, BRAKE/CLUTCH/FUEL PIPE, FEMALE, BRASS, 3/8" UNF PIPE DIA 3/16"
AEHU4A	NUT, BRAKE/CLUTCH/FUEL PIPE, FEMALE, BRASS, 7/16" UNF PIPE DIA 1/4"
HU41A	NUT, BRAKE/CLUTCH/FUEL PIPE, FEMALE, STEEL, 1/2" UNF PIPE DIA 5/16"
SU2A	NUT, BRAKE/CLUTCH/FUEL PIPE, FEMALE, STEEL, 10mm x 1mm PIPE DIA 3/16"
TN606031	NUT, BRAKE/CLUTCH/FUEL PIPE, FEMALE, STEEL, 3/8" UNF PIPE DIA 3/16"
SU4A	NUT, BRAKE/CLUTCH/FUEL PIPE, FEMALE, STEEL, 7/16" UNF PIPE DIA 1/4"
AEHU2	NUT, BRAKE/CLUTCH/FUEL PIPE, MALE, BRASS, 10mm x 1mm PIPE DIA 3/16"
AEHU3	NUT, BRAKE/CLUTCH/FUEL PIPE, MALE, BRASS, 3/8" BSF PIPE DIA 3/16"
AEHU1	NUT, BRAKE/CLUTCH/FUEL PIPE, MALE, BRASS, 3/8" UNF PIPE DIA 3/16"
AEHU7	NUT, BRAKE/CLUTCH/FUEL PIPE, MALE, BRASS, 7/16" UNF PIPE DIA 1/4"
AUSU40A	NUT, BRAKE/CLUTCH/FUEL PIPE, MALE, STEEL, 1/2" UNF PIPE DIA 5/16"
TM110051	NUT, BRAKE/CLUTCH/FUEL PIPE, MALE, STEEL, 10mm x 1mm PIPE DIA 3/16"
LK21994	NUT, BRAKE/CLUTCH/FUEL PIPE, MALE, STEEL, 3/8" BSF PIPE DIA 3/16"
TM606031	NUT, BRAKE/CLUTCH/FUEL PIPE, MALE, STEEL, 3/8" UNF PIPE DIA 3/16"
BHA4706	NUT, BRAKE/CLUTCH/FUEL PIPE, MALE, STEEL, 7/16" UNF PIPE DIA 1/4"
BCA4370	NUT, BRAKE/CLUTCH/FUEL PIPE, MALE, STEEL, 7/16" UNF PIPE DIA 3/16"
GHF269	NUT, BRASS, PLAIN, 3/8" UNC
GHF262	NUT, BRASS, PLAIN, 3/8" UNF
GHF270	NUT, BRASS, PLAIN, 5/16" UNC
GHF261	NUT, BRASS, PLAIN, 5/16" UNF
NQ2708	NUT, CAPTIVE, 5/16"
NQ2707	NUT, CAPTIVE, USE CAGE CN2 OR CN3, 1/4"
CN4	NUT, CAPTIVE, USE CAGE CN3, 1/4"
CN5	NUT, CAPTIVE, USE CAGE, 60032, 5/16"
ND608041	NUT, CASTLE, FULL, 1/2"
ND606041	NUT, CASTLE, FULL, 3/8"
ND610041	NUT, CASTLE, FULL, 5/8"
ND607041	NUT, CASTLE, FULL, 7/16"
ND609041	NUT, CASTLE, FULL, 9/16"
LN2211	NUT, CASTLE, HALF, 1/2"
NL608041	NUT, CASTLE, HALF, 1/2" UNF X 3/4"
LN2209	NUT, CASTLE, HALF, 3/8"
NL606041	NUT, CASTLE, HALF, 3/8" UNF X 9/16"
NL610041	NUT, CASTLE, HALF, 5/8" UNF X 15/16"
NL607041	NUT, CASTLE, HALF, 7/16"
NL607041	NUT, CASTLE, HALF, 7/16" UNF X 5/8"
LN2212	NUT, CASTLE, HALF, 9/16"
NL609041	NUT, CASTLE, HALF, 9/16" UNF X 7/8"
14B2685	NUT, CHROME DOME, 5/16UNF
BNN105	NUT, HEX BRASS, UNF, 5/16"
MNZ206	NUT, HEX,
FNZ508	NUT, HEX, HIGH TENSILE, ZINC, UNF, 1/2"
FNZ504	NUT, HEX, HIGH TENSILE, ZINC, UNF, 1/4"

FNZ512	NUT, HEX, HIGH TENSILE, ZINC, UNF, 3/4"
FNZ506	NUT, HEX, HIGH TENSILE, ZINC, UNF, 3/8"
FNZ505	NUT, HEX, HIGH TENSILE, ZINC, UNF, 5/16"
FNZ507	NUT, HEX, HIGH TENSILE, ZINC, UNF, 7/16"
FNZ604	NUT, HEX, LOCK, HIGH TENSILE, ZINC, UNF, 1/4"
FNZ612	NUT, HEX, LOCK, HIGH TENSILE, ZINC, UNF, 3/4"
FNZ607	NUT, HEX, LOCK, HIGH TENSILE, ZINC, UNF, 7/16"
FNN104	NUT, HEX, PLAIN, UNF, 1/4"
NH910011	NUT, HEX, PLAIN, UNF, 3/16"
FNN105	NUT, HEX, PLAIN, UNF, 5/16"
FNN107	NUT, HEX, PLAIN, UNF, 7/16"
FNZ308	NUT, HEX, SLOTTED, THICK, ZINC, UNF, 1/2"
FNZ408	NUT, HEX, SLOTTED, ZINC, UNF, 1/2"
FNZ407	NUT, HEX, SLOTTED, ZINC, UNF, 7/16"
NH604041	NUT, HEX, UNF, 1/4"
NH606041	NUT, HEX, UNF, 3/8"
NH605041	NUT, HEX, UNF, 5/16"
FNZ108	NUT, HEX, ZINC, UNF, 1/2"
FNZ104	NUT, HEX, ZINC, UNF, 1/4"
FNZ106	NUT, HEX, ZINC, UNF, 3/8"
FNZ105	NUT, HEX, ZINC, UNF, 5/16"
FNZ107	NUT, HEX, ZINC, UNF, 7/16"
FNZ103	NUT, HEX, ZINC, UNF, NO.10
CNZ102	NUT, HEX, ZINC, UNF, NO.6
AN3511	NUT, LOCK, FULL, 1/2"
AN3507	NUT, LOCK, FULL, 1/4"
AN3509	NUT, LOCK, FULL, 3/8"
AN3508	NUT, LOCK, FULL, 5/16"
AN3510	NUT, LOCK, FULL, 7/16"
FNP103	NUT, LOCK, HEX, CHROME, UNF, NO.10
FNN604	NUT, LOCK, HEX, PLAIN, HIGH TENSILE, UNF, 1/4"
FNP205	NUT, LOCK, HEX, PLAIN, UNF, 5/16"
FNN207	NUT, LOCK, HEX, PLAIN, UNF, 7/16"
FNZ204	NUT, LOCK, HEX, ZINC, UNF, 1/4"
FNZ206	NUT, LOCK, HEX, ZINC, UNF, 3/8"
FNZ205	NUT, LOCK, HEX, ZINC, UNF, 5/16"
LNN208	NUT, LOCK, PLAIN, UNF, 1/2"
NH806011	NUT, LOCK, UNC, NO.6
LNZ108	NUT, LOCK, ZINC, UNF, 1/2"
LNZ104	NUT, LOCK, ZINC, UNF, 1/4"
LNZ106	NUT, LOCK, ZINC, UNF, 3/8"
LNZ406	NUT, LOCK, ZINC, UNF, 3/8"
LNZ105	NUT, LOCK, ZINC, UNF, 5/16"
LNZ405	NUT, LOCK, ZINC, UNF, 5/16"
LNZ103	NUT, LOCK, ZINC, UNF, NO.10
LNZ102	NUT, LOCK, ZINC, UNF, NO.6
GHF245	NUT, LOCKING, 1/2" UNF
GHF241	NUT, LOCKING, 1/4" UNF
GHF243	NUT, LOCKING, 3/8" UNF
GHF242	NUT, LOCKING, 5/16" UNF
GHF244	NUT, LOCKING, 7/16" UNF
GHF225	NUT, NYLOC, FULL, 1/2" UNF
GHF221	NUT, NYLOC, FULL, 1/4" UNF
GHF220	NUT, NYLOC, FULL, 3/16" UNF
GHF223	NUT, NYLOC, FULL, 3/8" UNF
GHF222	NUT, NYLOC, FULL, 5/16" UNF
GHF226	NUT, NYLOC, FULL, 5/8" UNF
GHF224	NUT, NYLOC, FULL, 7/16" UNF
GHF2203	NUT, NYLOC, FULL 3/16" UNF X 3/8"

TN3211	NUT, NYLOC, HALF, 1/2"
GHF275	NUT, NYLOC, HALF, 1/2" UNF
GHF271	NUT, NYLOC, HALF, 1/4"
TN3209	NUT, NYLOC, HALF, 3/8"
GHF273	NUT, NYLOC, HALF, 3/8" UNF
TN3208	NUT, NYLOC, HALF, 5/16"
GHF272	NUT, NYLOC, HALF, 5/16" UNF
TN3213	NUT, NYLOC, HALF, 5/8"
GHF276	NUT, NYLOC, HALF, 5/8" UNF
TN3210	NUT, NYLOC, HALF, 7/16"
GHF274	NUT, NYLOC, HALF, 7/16" UNF
TN3212	NUT, NYLOC, HALF, 9/16"
TN3212	NUT, NYLOC, HALF, 9/16" UNF
YN2911	NUT, NYLOCK, FULL, 1/2"
YN2907	NUT, NYLOCK, FULL, 1/4"
YN2905	NUT, NYLOCK, FULL, 3/16"
YN2909	NUT, NYLOCK, FULL, 3/8"
YN2908	NUT, NYLOCK, FULL, 5/16"
YN2913	NUT, NYLOCK, FULL, 5/8"
YN2910	NUT, NYLOCK, FULL, 7/16"
YN2912	NUT, NYLOCK, FULL, 9/16"
LNZ208	NUT, NYLOCK, ZINC, UNF, 1/2"
LNZ204	NUT, NYLOCK, ZINC, UNF, 1/4"
LNZ206	NUT, NYLOCK, ZINC, UNF, 3/8"
LNZ205	NUT, NYLOCK, ZINC, UNF, 5/16"
LNZ207	NUT, NYLOCK, ZINC, UNF, 7/16"
LNZ203	NUT, NYLOCK, ZINC, UNF, NO.10
HN2011	NUT, PLAIN, FULL, 1/2"
GHF204	NUT, PLAIN, FULL, 1/2" UNF X 3/4"
HN2007	NUT, PLAIN, FULL, 1/4"
HN2057	NUT, PLAIN, FULL, 1/4"
GHF207	NUT, PLAIN, FULL, 1/4" UNC X 7/16"
GHF200	NUT, PLAIN, FULL, 1/4" UNF X 7/16"
HN2009	NUT, PLAIN, FULL, 3/8"
HN2059	NUT, PLAIN, FULL, 3/8"
GHF209	NUT, PLAIN, FULL, 3/8" UNC X 9/16"
GHF202	NUT, PLAIN, FULL, 3/8" UNF X 9/16"
HN2008	NUT, PLAIN, FULL, 5/16"
HN2058	NUT, PLAIN, FULL, 5/16"
GHF208	NUT, PLAIN, FULL, 5/16" UNC X 1/2"
GHF201	NUT, PLAIN, FULL, 5/16" UNF X 1/2"
HN2013	NUT, PLAIN, FULL, 5/8"
NH610041	NUT, PLAIN, FULL, 5/8" UNF X 15/16"
HN2010	NUT, PLAIN, FULL, 7/16"
GHF203	NUT, PLAIN, FULL, 7/16" UNF X 5/8"
HN2012	NUT, PLAIN, FULL, 9/16"
NH609041	NUT, PLAIN, FULL, 9/19" UNF X 7/8"
HN2005	NUT, PLAIN, FULL, SPANNER SIZE 3/8", 3/16"
GHF206	NUT, PLAIN, FULL, SPANNER SIZE 5/16", 3/16"
HN2003	NUT, PLAIN, FULL, UNF, SPANNER SIZE 5/16"NO.6
JN2111	NUT, PLAIN, HALF, 1/2"
NT608041	NUT, PLAIN, HALF, 1/2" UNF X 3/4"
JN2157	NUT, PLAIN, HALF, 1/4"
NJ2107	NUT, PLAIN, HALF, 1/4"
NT504041	NUT, PLAIN, HALF, 1/4" UNC X 7/16"
NT604041	NUT, PLAIN, HALF, 1/4" UNF X 7/16"
JN2109	NUT, PLAIN, HALF, 3/8"
JN2159	NUT, PLAIN, HALF, 3/8"
NT506041	NUT, PLAIN, HALF, 3/8" UNC X 9/16"

NT606041	NUT, PLAIN, HALF, 3/8" UNF X 9/16"
JN2108	NUT, PLAIN, HALF, 5/16"
JN2158	NUT, PLAIN, HALF, 5/16"
NT505041	NUT, PLAIN, HALF, 5/16" UNC X 1/2"
NT605041	NUT, PLAIN, HALF, 5/16" UNF X 1/2"
JN2113	NUT, PLAIN, HALF, 5/8"
NT610041	NUT, PLAIN, HALF, 5/8" UNF X 15/16"
JN2110	NUT, PLAIN, HALF, 7/16"
NT607041	NUT, PLAIN, HALF, 7/16" UNF X 5/8"
JN2112	NUT, PLAIN, HALF, 9/16"
NT609041	NUT, PLAIN, HALF, 9/19" UNF X 7/8"
PFS104S	NUT, SPIRE, 1/8"
PFS106S	NUT, SPIRE, 3/16"
PFS103S	NUT, SPIRE, 3/32"
PFS105S	NUT, SPIRE, 5/32"
GHF702	NUT, SPIRE, FLAT, No.10
GHF703	NUT, SPIRE, FLAT, No.12
GHF704	NUT, SPIRE, FLAT, No.14
GHF700	NUT, SPIRE, FLAT, No.6
GHF701	NUT, SPIRE, FLAT, No.8
GHF713	NUT, SPIRE, FOLDED, No.10
GHF714	NUT, SPIRE, FOLDED, No.12
GHF711	NUT, SPIRE, FOLDED, No.6
GHF712	NUT, SPIRE, FOLDED, No.8
108326	PIN, CLEVIS, 1/8" X 1/2"
CLZ417	PIN, CLEVIS, LENGTH IS FROM UNDER HEAD TO CENTRE OF HOLE, 1/4" X 1 1/16"
CLZ427	PIN, CLEVIS, LENGTH IS FROM UNDER HEAD TO CENTRE OF HOLE, 1/4" X 1 11/16"
CLZ416	PIN, CLEVIS, LENGTH IS FROM UNDER HEAD TO CENTRE OF HOLE, 1/4" X 1"
CLZ408	PIN, CLEVIS, LENGTH IS FROM UNDER HEAD TO CENTRE OF HOLE, 1/4" X 1/2"
CLZ411	PIN, CLEVIS, LENGTH IS FROM UNDER HEAD TO CENTRE OF HOLE, 1/4" X 11/16"
CLZ413	PIN, CLEVIS, LENGTH IS FROM UNDER HEAD TO CENTRE OF HOLE, 1/4" X 13/16"
CLZ415	PIN, CLEVIS, LENGTH IS FROM UNDER HEAD TO CENTRE OF HOLE, 1/4" X 15/16"
CLZ412	PIN, CLEVIS, LENGTH IS FROM UNDER HEAD TO CENTRE OF HOLE, 1/4" X 3/4"
CLZ410	PIN, CLEVIS, LENGTH IS FROM UNDER HEAD TO CENTRE OF HOLE, 1/4" X 5/8"
CLZ414	PIN, CLEVIS, LENGTH IS FROM UNDER HEAD TO CENTRE OF HOLE, 1/4" X 7/8"
CLZ409	PIN, CLEVIS, LENGTH IS FROM UNDER HEAD TO CENTRE OF HOLE, 1/4" X 9/19"
CLZ317	PIN, CLEVIS, LENGTH IS FROM UNDER HEAD TO CENTRE OF HOLE, 3/16" X 1 1/16"
CLZ316	PIN, CLEVIS, LENGTH IS FROM UNDER HEAD TO CENTRE OF HOLE, 3/16" X 1"
CLZ308	PIN, CLEVIS, LENGTH IS FROM UNDER HEAD TO CENTRE OF HOLE, 3/16" X 1/2"
CLZ311	PIN, CLEVIS, LENGTH IS FROM UNDER HEAD TO CENTRE OF HOLE, 3/16" X 11/16"
CLZ313	PIN, CLEVIS, LENGTH IS FROM UNDER HEAD TO CENTRE OF HOLE, 3/16" X 13/16"
CLZ315	PIN, CLEVIS, LENGTH IS FROM UNDER HEAD TO CENTRE OF HOLE, 3/16" X 15/16"
CLZ312	PIN, CLEVIS, LENGTH IS FROM UNDER HEAD TO CENTRE OF HOLE, 3/16" X 3/4"
CLZ310	PIN, CLEVIS, LENGTH IS FROM UNDER HEAD TO CENTRE OF HOLE, 3/16" X 5/8"
CLZ307	PIN, CLEVIS, LENGTH IS FROM UNDER HEAD TO CENTRE OF HOLE, 3/16" X 7/16"
CLZ314	PIN, CLEVIS, LENGTH IS FROM UNDER HEAD TO CENTRE OF HOLE, 3/16" X 7/8"
CLZ309	PIN, CLEVIS, LENGTH IS FROM UNDER HEAD TO CENTRE OF HOLE, 3/16" X 9/16"
CLZ517	PIN, CLEVIS, LENGTH IS FROM UNDER HEAD TO CENTRE OF HOLE, 5/16" X 1 1/16"
CLZ518	PIN, CLEVIS, LENGTH IS FROM UNDER HEAD TO CENTRE OF HOLE, 5/16" X 1 1/18"
CLZ516	PIN, CLEVIS, LENGTH IS FROM UNDER HEAD TO CENTRE OF HOLE, 5/16" X 1"
CLZ511	PIN, CLEVIS, LENGTH IS FROM UNDER HEAD TO CENTRE OF HOLE, 5/16" X 11/16"
CLZ513	PIN, CLEVIS, LENGTH IS FROM UNDER HEAD TO CENTRE OF HOLE, 5/16" X 13/16"
CLZ515	PIN, CLEVIS, LENGTH IS FROM UNDER HEAD TO CENTRE OF HOLE, 5/16" X 15/16"
CLZ512	PIN, CLEVIS, LENGTH IS FROM UNDER HEAD TO CENTRE OF HOLE, 5/16" X 3/4"
CLZ510	PIN, CLEVIS, LENGTH IS FROM UNDER HEAD TO CENTRE OF HOLE, 5/16" X 5/8"
CLZ514	PIN, CLEVIS, LENGTH IS FROM UNDER HEAD TO CENTRE OF HOLE, 5/16" X 7/8"
PJ8504	PIN, CLEVIS, LENGTH IS FROM UNDER HEAD TO END, 3/16" X 3/8"
GHF500	PIN, SPLIT, 1/16" X 1 1/2"
GHF504	PIN, SPLIT, 1/8" X 2 1/4"

GHF513	PIN, SPLIT, 3/16" X 3"
GHF502	PIN, SPLIT, 3/32" X 1 1/2"
GHF506	PIN, SPLIT, 3/32" X 2 1/4"
GHF501	PIN, SPLIT, 5/64" X 1 1/2"
GHF503	PIN, SPLIT, 7/64" X 2 1/4"
GHF505	PIN, SPLIT, 9/64" X 2 1/4"
RU608313	RIVET, POP, CLOSED END, 1/8" x 1/2"
RU608123	RIVET, POP, CLOSED END, 1/8" x 3/8"
RU612123	RIVET, POP, CLOSED END, 3/16" x 5/16"
RA608176	RIVET, POP, OPEN END, 1/8" x 1/4"
RA608126	RIVET, POP, OPEN END, 1/8" x 3/16"
RA608253	RIVET, POP, OPEN END, 1/8" x 3/8"
RA608236	RIVET, POP, OPEN END, 1/8" x 5/16"
RA607096	RIVET, POP, OPEN END, 2.9mm x 5mm
GHF117	SCREW 1/4" UNF x 0.75"
GHF421	SCREW 6X 1/2 AB606041, SELF TAP
PTZ805	Screw No. 8 x 5/8"
NCS612	SCREW, 3/8"
NCS505	SCREW, 5/16"
608400A	SCREW, BLEED, BRAKE/CLUTCH, 10mm metric
27H7166	SCREW, BLEED, BRAKE/CLUTCH, 3/8" BSF
556508A	SCREW, BLEED, BRAKE/CLUTCH, 3/8" UNF
CMP308	SCREW, CROSS HEAD, CSK, CHROME, UNF, NO.10 X 1/2"
CMP310	SCREW, CROSS HEAD, CSK, CHROME, UNF, NO.10 X 5/8"
CMZ420	SCREW, CROSS HEAD, CSK, ZINC, UNF, 1/4", 1 1/4"
CMZ428	SCREW, CROSS HEAD, CSK, ZINC, UNF, 1/4", 1 3/4"
CMZ416	SCREW, CROSS HEAD, CSK, ZINC, UNF, 1/4", 1"
CMZ408	SCREW, CROSS HEAD, CSK, ZINC, UNF, 1/4", 1/2"
CMZ412	SCREW, CROSS HEAD, CSK, ZINC, UNF, 1/4", 3/4"
CMZ410	SCREW, CROSS HEAD, CSK, ZINC, UNF, 1/4", 5/8"
CMZ407	SCREW, CROSS HEAD, CSK, ZINC, UNF, 1/4", 7/16"
CMZ414	SCREW, CROSS HEAD, CSK, ZINC, UNF, 1/4", 7/8"
CMZ516	SCREW, CROSS HEAD, CSK, ZINC, UNF, 5/16", 1"
CMZ512	SCREW, CROSS HEAD, CSK, ZINC, UNF, 5/16, 3/4"
CMZ316	SCREW, CROSS HEAD, CSK, ZINC, UNF, NO.10 X 1"
CMZ308	SCREW, CROSS HEAD, CSK, ZINC, UNF, NO.10 X 1/2"
CMZ304	SCREW, CROSS HEAD, CSK, ZINC, UNF, NO.10 X 1/4"
CMZ312	SCREW, CROSS HEAD, CSK, ZINC, UNF, NO.10 X 3/4"
CMZ306	SCREW, CROSS HEAD, CSK, ZINC, UNF, NO.10 X 3/8"
CMZ305	SCREW, CROSS HEAD, CSK, ZINC, UNF, NO.10 X 5/16"
CMZ310	SCREW, CROSS HEAD, CSK, ZINC, UNF, NO.10 X 5/8"
CMZ307	SCREW, CROSS HEAD, CSK, ZINC, UNF, NO.10 X 7/16"
CMZ208	SCREW, CROSS HEAD, CSK, ZINC, UNF, NO.6 X 1/2"
CMZ204	SCREW, CROSS HEAD, CSK, ZINC, UNF, NO.6 X 1/4"
CMZ203	SCREW, CROSS HEAD, CSK, ZINC, UNF, NO.6 X 3/16"
PMP412	SCREW, CROSS HEAD, PAN HEAD, CHROME, UNF, 1/4" X 3/4"
PMP516	SCREW, CROSS HEAD, PAN HEAD, CHROME, UNF, 5/16" X 1"
PMP308	SCREW, CROSS HEAD, PAN HEAD, CHROME, UNF, NO.10 X 1/2"
PMP312	SCREW, CROSS HEAD, PAN HEAD, CHROME, UNF, NO.10 X 3/4"
PMP208	SCREW, CROSS HEAD, PAN HEAD, CHROME, UNF, NO.6 X 1/2"
PTP603	SCREW, CROSS HEAD, PAN HEAD, CHROME, UNF, NO.6 X 3/8"
PMP214	SCREW, CROSS HEAD, PAN HEAD, CHROME, UNF, NO.6 X 7/8"
PPZ308	SCREW, CROSS HEAD, PAN HEAD, POINTED, ZINC, UNF, NO.10 X 1/2"
PMZ810	SCREW, CROSS HEAD, PAN HEAD, ZINC, UNF, 1/2" X 5/8"
PMZ416	SCREW, CROSS HEAD, PAN HEAD, ZINC, UNF, 1/4" X 1"
PMZ408	SCREW, CROSS HEAD, PAN HEAD, ZINC, UNF, 1/4" X 1/2"
PMZ406	SCREW, CROSS HEAD, PAN HEAD, ZINC, UNF, 1/4" X 3/8"
PMZ410	SCREW, CROSS HEAD, PAN HEAD, ZINC, UNF, 1/4" X 5/8"
PMZ320	SCREW, CROSS HEAD, PAN HEAD, ZINC, UNF, NO.10 X 1 1/4"

PMZ316	SCREW, CROSS HEAD, PAN HEAD, ZINC, UNF, NO.10 X 1"
PMZ308	SCREW, CROSS HEAD, PAN HEAD, ZINC, UNF, NO.10 X 1/2"
PMZ304	SCREW, CROSS HEAD, PAN HEAD, ZINC, UNF, NO.10 X 1/4"
PMZ312	SCREW, CROSS HEAD, PAN HEAD, ZINC, UNF, NO.10 X 3/4"
PMZ306	SCREW, CROSS HEAD, PAN HEAD, ZINC, UNF, NO.10 X 3/8"
PMZ305	SCREW, CROSS HEAD, PAN HEAD, ZINC, UNF, NO.10 X 5/16"
PMZ310	SCREW, CROSS HEAD, PAN HEAD, ZINC, UNF, NO.10 X 5/8"
PMZ307	SCREW, CROSS HEAD, PAN HEAD, ZINC, UNF, NO.10 X 7/16"
PMZ314	SCREW, CROSS HEAD, PAN HEAD, ZINC, UNF, NO.10 X 7/8"
PMZ216	SCREW, CROSS HEAD, PAN HEAD, ZINC, UNF, NO.6 X 1"
PMZ208	SCREW, CROSS HEAD, PAN HEAD, ZINC, UNF, NO.6 X 1/2"
PMZ204	SCREW, CROSS HEAD, PAN HEAD, ZINC, UNF, NO.6 X 1/4"
PMZ206	SCREW, CROSS HEAD, PAN HEAD, ZINC, UNF, NO.6 X 3/8"
PMZ210	SCREW, CROSS HEAD, PAN HEAD, ZINC, UNF, NO.6 X 5/8"
PTZ804	SCREW, CROSS HEAD, PAN HEAD, ZINC, UNF, NO.8 X 1/2"
PTZ803	SCREW, CROSS HEAD, PAN HEAD, ZINC, UNF, NO.8 X 3/8"
PTZ604	SCREW, CROSS HEAD, ROUND HEAD, SELF TAP, CHROME, No.6 x 1/2"
PTZ602	SCREW, CROSS HEAD, ROUND HEAD, SELF TAP, CHROME, No.6 x 1/4"
PTZ603	SCREW, CROSS HEAD, ROUND HEAD, SELF TAP, CHROME, No.6 x 3/8"
PTZ605	SCREW, CROSS HEAD, ROUND HEAD, SELF TAP, CHROME, No.6 x 5/8"
RMP320	SCREW, CSK, RAISED HEAD, CHROME, UNF, NO.10 X 1 1/4"
RMP316	SCREW, CSK, RAISED HEAD, CHROME, UNF, NO.10 X 1"
RMP308	SCREW, CSK, RAISED HEAD, CHROME, UNF, NO.10 X 1/2"
RMP312	SCREW, CSK, RAISED HEAD, CHROME, UNF, NO.10 X 3/4"
RMP306	SCREW, CSK, RAISED HEAD, CHROME, UNF, NO.10 X 3/8"
RMP310	SCREW, CSK, RAISED HEAD, CHROME, UNF, NO.10 X 3/8"
RMP212	SCREW, CSK, RAISED HEAD, CHROME, UNF, NO.6 X 3/4"
RMP214	SCREW, CSK, RAISED HEAD, CHROME, UNF, NO.6 X 7/8"
RMZ308	SCREW, CSK, RAISED HEAD, ZINC, UNF, NO.10 X 1/2"
RMZ204	SCREW, CSK, RAISED HEAD, ZINC, UNF, NO.10 X 1/4"
RMZ310	SCREW, CSK, RAISED HEAD, ZINC, UNF, NO.10 X 5/8"
AC610081	SCREW, CSK, SELF TAP, ZINC, UNC, No.10 X 1"
AC610041	SCREW, CSK, SELF TAP, ZINC, UNC, No.10 X 1/2"
AC610061	SCREW, CSK, SELF TAP, ZINC, UNC, No.10 X 3/4"
AC612081	SCREW, CSK, SELF TAP, ZINC, UNC, No.12 X 1"
AC612041	SCREW, CSK, SELF TAP, ZINC, UNC, No.12 X 1/2"
AC614081	SCREW, CSK, SELF TAP, ZINC, UNC, No.14 X 1"
AC614061	SCREW, CSK, SELF TAP, ZINC, UNC, No.14 X 3/4"
AC606021	SCREW, CSK, SELF TAP, ZINC, UNF
AC604021	SCREW, CSK, SELF TAP, ZINC, UNF, No.4 X 1/4"
AC606081	SCREW, CSK, SELF TAP, ZINC, UNF, No.6 X 1"
AC606041	SCREW, CSK, SELF TAP, ZINC, UNF, No.6 X 1/2"
AC606061	SCREW, CSK, SELF TAP, ZINC, UNF, No.6 X 3/4"
AC608041	SCREW, CSK, SELF TAP, ZINC, UNF, No.8 X 1/2"
AC608061	SCREW, CSK, SELF TAP, ZINC, UNF, No.8 X 3/4"
AHH9239	SCREW, CSK, UNF, 1/4" X 1 3/8
HNS412	SCREW, HEX HEAD, FULL THREAD, UNF, PLAIN, 1/4" X 1 1/2"
HNS505	SCREW, HEX HEAD, FULL THREAD, UNF, PLAIN, 5/16" X 5/8"
HNS507	SCREW, HEX HEAD, FULL THREAD, UNF, PLAIN, 5/16" X 7/8"
HZS412	SCREW, HEX HEAD, FULL THREAD, UNF, ZINC, 1/4" X 1 1/2"
HZS410	SCREW, HEX HEAD, FULL THREAD, UNF, ZINC, 1/4" X 1 1/4"
HZS409	SCREW, HEX HEAD, FULL THREAD, UNF, ZINC, 1/4" X 1 1/8"
HZS411	SCREW, HEX HEAD, FULL THREAD, UNF, ZINC, 1/4" X 1 3/8"
HZS415	SCREW, HEX HEAD, FULL THREAD, UNF, ZINC, 1/4" X 1 7/8"
HZS408	SCREW, HEX HEAD, FULL THREAD, UNF, ZINC, 1/4" X 1"
HZS404	SCREW, HEX HEAD, FULL THREAD, UNF, ZINC, 1/4" X 1/2"
HZS416	SCREW, HEX HEAD, FULL THREAD, UNF, ZINC, 1/4" X 2"
HZS406	SCREW, HEX HEAD, FULL THREAD, UNF, ZINC, 1/4" X 3/4"
HZS403	SCREW, HEX HEAD, FULL THREAD, UNF, ZINC, 1/4" X 3/8"

HZS405	SCREW, HEX HEAD, FULL THREAD, UNF, ZINC, 1/4" X 5/8"
HZS407	SCREW, HEX HEAD, FULL THREAD, UNF, ZINC, 1/4" X 7/8"
HZS610	SCREW, HEX HEAD, FULL THREAD, UNF, ZINC, 3/8" X 1 1/4"
HZS608	SCREW, HEX HEAD, FULL THREAD, UNF, ZINC, 3/8" X 1"
HZS606	SCREW, HEX HEAD, FULL THREAD, UNF, ZINC, 3/8" X 3/4"
HZS603	SCREW, HEX HEAD, FULL THREAD, UNF, ZINC, 3/8" X 3/8"
HZS607	SCREW, HEX HEAD, FULL THREAD, UNF, ZINC, 3/8" X 7/8"
HZS510	SCREW, HEX HEAD, FULL THREAD, UNF, ZINC, 5/16" X 1 1/4"
HZS509	SCREW, HEX HEAD, FULL THREAD, UNF, ZINC, 5/16" X 1 1/8"
HZS514	SCREW, HEX HEAD, FULL THREAD, UNF, ZINC, 5/16" X 1 3/4"
HZS511	SCREW, HEX HEAD, FULL THREAD, UNF, ZINC, 5/16" X 1 3/8"
HZS508	SCREW, HEX HEAD, FULL THREAD, UNF, ZINC, 5/16" X 1"
HZS504	SCREW, HEX HEAD, FULL THREAD, UNF, ZINC, 5/16" X 1/2"
HZS506	SCREW, HEX HEAD, FULL THREAD, UNF, ZINC, 5/16" X 3/4"
HZS505	SCREW, HEX HEAD, FULL THREAD, UNF, ZINC, 5/16" X 5/8"
HZS507	SCREW, HEX HEAD, FULL THREAD, UNF, ZINC, 5/16" X 7/8"
HZS710	SCREW, HEX HEAD, FULL THREAD, UNF, ZINC, 7/16" X 1 1/4"
SH506121	SCREW, HEX, UNC, 3/8" X 1 1/2"
SH506101	SCREW, HEX, UNC, 3/8" X 1 1/4"
SH506091	SCREW, HEX, UNC, 3/8" X 1 1/8"
SH506111	SCREW, HEX, UNC, 3/8" X 1 3/8"
SH506081	SCREW, HEX, UNC, 3/8" X 1"
SH506041	SCREW, HEX, UNC, 3/8" X 1/2"
SH506161	SCREW, HEX, UNC, 3/8" X 2"
SH506241	SCREW, HEX, UNC, 3/8" X 3"
SH506061	SCREW, HEX, UNC, 3/8" X 3/4"
SH506071	SCREW, HEX, UNC, 3/8" X 7/8"
SH505121	SCREW, HEX, UNC, 5/16" X 1 1/2"
SH505101	SCREW, HEX, UNC, 5/16" X 1 1/4"
SH505091	SCREW, HEX, UNC, 5/16" X 1 1/8"
SH505141	SCREW, HEX, UNC, 5/16" X 1 3/4"
SH505111	SCREW, HEX, UNC, 5/16" X 1 3/8"
SH505081	SCREW, HEX, UNC, 5/16" X 1"
SH505041	SCREW, HEX, UNC, 5/16" X 1/2"
SH505201	SCREW, HEX, UNC, 5/16" X 2 1/2"
SH505061	SCREW, HEX, UNC, 5/16" X 3/4"
SH505031	SCREW, HEX, UNC, 5/16" X 3/8"
SH505051	SCREW, HEX, UNC, 5/16" X 5/8"
SH505071	SCREW, HEX, UNC, 5/16" X 7/8"
AB606051	SCREW, PAN HEAD, SELF TAP, NO 6 X 5/8"
AB610081	SCREW, PAN HEAD, SELF TAP, ZINC, UNC, No.10 X 1"
AB610041	SCREW, PAN HEAD, SELF TAP, ZINC, UNC, No.10 X 1/2"
AB610061	SCREW, PAN HEAD, SELF TAP, ZINC, UNC, No.10 X 3/4"
AB610051	SCREW, PAN HEAD, SELF TAP, ZINC, UNC, NO.10 X 5/8"
AB612081	SCREW, PAN HEAD, SELF TAP, ZINC, UNC, No.12 X 1"
AB612041	SCREW, PAN HEAD, SELF TAP, ZINC, UNC, No.12 X 1/2"
AB612061	SCREW, PAN HEAD, SELF TAP, ZINC, UNC, No.12 X 3/4"
AB614081	SCREW, PAN HEAD, SELF TAP, ZINC, UNC, No.14 X 1"
AB614061	SCREW, PAN HEAD, SELF TAP, ZINC, UNC, No.14 X 3/4"
AB604023	SCREW, PAN HEAD, SELF TAP, ZINC, UNF, NO.4 X 1"
AB604021	SCREW, PAN HEAD, SELF TAP, ZINC, UNF, No.4 X 1/4"
AB606081	SCREW, PAN HEAD, SELF TAP, ZINC, UNF, No.6 X 1"
AB606041	SCREW, PAN HEAD, SELF TAP, ZINC, UNF, No.6 X 1/2"
AB606021	SCREW, PAN HEAD, SELF TAP, ZINC, UNF, No.6 X 1/4"
AB606061	SCREW, PAN HEAD, SELF TAP, ZINC, UNF, No.6 X 3/4"
AB606031	SCREW, PAN HEAD, SELF TAP, ZINC, UNF, No.6 X 3/8"
AB608081	SCREW, PAN HEAD, SELF TAP, ZINC, UNF, No.8 X 1"
AB608041	SCREW, PAN HEAD, SELF TAP, ZINC, UNF, No.8 X 1/2"
AB608061	SCREW, PAN HEAD, SELF TAP, ZINC, UNF, No.8 X 3/4"

SE604121	SCREW, PAN, CROSS, ZINC, UNF, 1/4" X 1 1/2"
SE604081	SCREW, PAN, CROSS, ZINC, UNF, 1/4" X 1"
SE605081	SCREW, PAN, CROSS, ZINC, UNF, 1/4" X 1"
SE604041	SCREW, PAN, CROSS, ZINC, UNF, 1/4" X 1/2"
SE604061	SCREW, PAN, CROSS, ZINC, UNF, 1/4" X 3/4"
SE605061	SCREW, PAN, CROSS, ZINC, UNF, 1/4" X 3/4"
SE604051	SCREW, PAN, CROSS, ZINC, UNF, 1/4" X 5/8"
SE604071	SCREW, PAN, CROSS, ZINC, UNF, 1/4" X 7/8"
SF604083	SCREW, PAN, CSK, ZINC, UNF,
SF604101	SCREW, PAN, CSK, ZINC, UNF,
SF604121	SCREW, PAN, CSK, ZINC, UNF, 1/4" X 1 1/2"
SF604081	SCREW, PAN, CSK, ZINC, UNF, 1/4" X 1"
SF604041	SCREW, PAN, CSK, ZINC, UNF, 1/4" X 1/2"
SF604061	SCREW, PAN, CSK, ZINC, UNF, 1/4" X 3/4"
SF604051	SCREW, PAN, CSK, ZINC, UNF, 1/4" X 5/8"
SF604071	SCREW, PAN, CSK, ZINC, UNF, 1/4" X 7/8"
SF605081	SCREW, PAN, CSK, ZINC, UNF, 5/16" X 1"
SF605061	SCREW, PAN, CSK, ZINC, UNF, 5/16" X 3/4"
GHF431	SCREW, PK, No.14 x 1", SELF TAP
AD606084	SCREW, RAISED CROSS CSK HEAD, SELF TAP, BLACK, NO.10 X 1 1/4"
AD606064	SCREW, RAISED CROSS CSK HEAD, SELF TAP, BLACK, NO.6 X 7/8"
AD610063	SCREW, RAISED CROSS CSK HEAD, SELF TAP, CHROME, NO.10 X 3/4"
AD606041	SCREW, RAISED CROSS CSK HEAD, SELF TAP, CHROME, NO.6 X 1/2"
AD606043	SCREW, RAISED CROSS CSK HEAD, SELF TAP, CHROME, NO.6 X 1/2"
AD606063	SCREW, RAISED CROSS CSK HEAD, SELF TAP, CHROME, NO.6 X 3/4"
AD606053	SCREW, RAISED CROSS CSK HEAD, SELF TAP, CHROME, NO.6 X 5/8"
AD606073	SCREW, RAISED CROSS CSK HEAD, SELF TAP, CHROME, NO.6 X 7/8"
AD608033	SCREW, RAISED CROSS CSK HEAD, SELF TAP, CHROME, NO.8 X 3/8"
AD608053	SCREW, RAISED CROSS CSK HEAD, SELF TAP, CHROME, NO.8 X 5/8"
AD608073	SCREW, RAISED CROSS CSK HEAD, SELF TAP, CHROME, NO.8 X 7/8"
SG604103	SCREW, RSD HD, CSK, CHROME, UNF, 1/4" X 1 1/4"
SG604083	SCREW, RSD HD, CSK, CHROME, UNF, 1/4" X 1"
SG605061	SCREW, RSD HD, CSK, ZINC, UNF, 5/16" X 3/4"
PTZ1004	SCREW, SELF TAP, PAN HEAD No.10 x 1/2"
PTZ1006	SCREW, SELF TAP, PAN HEAD No.10 x 3/4"
PTZ1003	SCREW, SELF TAP, PAN HEAD No.10 x 3/8"
GHF400	SCREW, SELF TAP, ZINC No.6 X 1/2"(AC606041)
SH504121	SCREW, SET, HEX HEAD, UNC, 1/4" X 1 1/2"
SH504101	SCREW, SET, HEX HEAD, UNC, 1/4" X 1 1/4"
SH504091	SCREW, SET, HEX HEAD, UNC, 1/4" X 1 1/8"
SH504141	SCREW, SET, HEX HEAD, UNC, 1/4" X 1 3/4"
SH504111	SCREW, SET, HEX HEAD, UNC, 1/4" X 1 3/8"
SH504081	SCREW, SET, HEX HEAD, UNC, 1/4" X 1"
SH504041	SCREW, SET, HEX HEAD, UNC, 1/4" X 1/2"
SH504181	SCREW, SET, HEX HEAD, UNC, 1/4" X 2 1/4"
SH504061	SCREW, SET, HEX HEAD, UNC, 1/4" X 3/4"
SH504031	SCREW, SET, HEX HEAD, UNC, 1/4" X 3/8"
SH504051	SCREW, SET, HEX HEAD, UNC, 1/4" X 5/8"
SH504071	SCREW, SET, HEX HEAD, UNC, 1/4" X 7/8"
SH608121	SCREW, SET, HEX HEAD, UNF, 1/2" X 1 1/2"
SH608141	SCREW, SET, HEX HEAD, UNF, 1/2" X 1 3/4"
SH608081	SCREW, SET, HEX HEAD, UNF, 1/2" X 1" SH6
SH608041	SCREW, SET, HEX HEAD, UNF, 1/2" X 1/2" S
SH608201	SCREW, SET, HEX HEAD, UNF, 1/2" X 2 1/2"
SH608051	SCREW, SET, HEX HEAD, UNF, 1/2" X 5/8" S
SH604121	SCREW, SET, HEX HEAD, UNF, 1/4" X 1 1/2"
SH604101	SCREW, SET, HEX HEAD, UNF, 1/4" X 1 1/4"
SH604091	SCREW, SET, HEX HEAD, UNF, 1/4" X 1 1/8"
SH604141	SCREW, SET, HEX HEAD, UNF, 1/4" X 1 3/4"

SH604111	SCREW, SET, HEX HEAD, UNF, 1/4" X 1 3/8"
SH604081	SCREW, SET, HEX HEAD, UNF, 1/4" X 1"
SH604041	SCREW, SET, HEX HEAD, UNF, 1/4" X 1/2"
SH604161	SCREW, SET, HEX HEAD, UNF, 1/4" X 2
SH604061	SCREW, SET, HEX HEAD, UNF, 1/4" X 3/4"
SH604031	SCREW, SET, HEX HEAD, UNF, 1/4" X 3/8"
SH604051	SCREW, SET, HEX HEAD, UNF, 1/4" X 5/8"
SH604071	SCREW, SET, HEX HEAD, UNF, 1/4" X 7/8"
HU508	SCREW, SET, HEX HEAD, UNF, 3/16" X 1"
HU504	SCREW, SET, HEX HEAD, UNF, 3/16" X 1/2"
HU506	SCREW, SET, HEX HEAD, UNF, 3/16" X 3/4"
HU503	SCREW, SET, HEX HEAD, UNF, 3/16" X 3/8"
HU505	SCREW, SET, HEX HEAD, UNF, 3/16" X 5/8"
HU507	SCREW, SET, HEX HEAD, UNF, 3/16" X 7/8"
SH606121	SCREW, SET, HEX HEAD, UNF, 3/8" X 1 1/2"
SH606101	SCREW, SET, HEX HEAD, UNF, 3/8" X 1 1/4"
SH606091	SCREW, SET, HEX HEAD, UNF, 3/8" X 1 1/8"
SH606141	SCREW, SET, HEX HEAD, UNF, 3/8" X 1 3/4"
SH606111	SCREW, SET, HEX HEAD, UNF, 3/8" X 1 3/8"
SH606081	SCREW, SET, HEX HEAD, UNF, 3/8" X 1"
SH606041	SCREW, SET, HEX HEAD, UNF, 3/8" X 1/2"
SH606201	SCREW, SET, HEX HEAD, UNF, 3/8" X 2 1/2"
SH606181	SCREW, SET, HEX HEAD, UNF, 3/8" X 2 1/4"
SH606161	SCREW, SET, HEX HEAD, UNF, 3/8" X 2"
SH606061	SCREW, SET, HEX HEAD, UNF, 3/8" X 3/4"
SH606031	SCREW, SET, HEX HEAD, UNF, 3/8" X 3/8"
SH606051	SCREW, SET, HEX HEAD, UNF, 3/8" X 5/8"
SH606071	SCREW, SET, HEX HEAD, UNF, 3/8" X 7/8"
SH605121	SCREW, SET, HEX HEAD, UNF, 5/16" X 1 1/2"
SH605101	SCREW, SET, HEX HEAD, UNF, 5/16" X 1 1/4"
SH605091	SCREW, SET, HEX HEAD, UNF, 5/16" X 1 1/8"
SH605141	SCREW, SET, HEX HEAD, UNF, 5/16" X 1 3/4"
SH605111	SCREW, SET, HEX HEAD, UNF, 5/16" X 1 3/8"
SH605151	SCREW, SET, HEX HEAD, UNF, 5/16" X 1 7/8"
SH605081	SCREW, SET, HEX HEAD, UNF, 5/16" X 1"
SH605041	SCREW, SET, HEX HEAD, UNF, 5/16" X 1/2"
SH605201	SCREW, SET, HEX HEAD, UNF, 5/16" X 2 1/2"
SH605181	SCREW, SET, HEX HEAD, UNF, 5/16" X 2 1/4"
SH605221	SCREW, SET, HEX HEAD, UNF, 5/16" X 2 3/4"
SH605161	SCREW, SET, HEX HEAD, UNF, 5/16" X 2"
SH605241	SCREW, SET, HEX HEAD, UNF, 5/16" X 3"
SH605061	SCREW, SET, HEX HEAD, UNF, 5/16" X 3/4"
SH605031	SCREW, SET, HEX HEAD, UNF, 5/16" X 3/8"
SH605051	SCREW, SET, HEX HEAD, UNF, 5/16" X 5/8"
SH605071	SCREW, SET, HEX HEAD, UNF, 5/16" X 7/8"
SH607121	SCREW, SET, HEX HEAD, UNF, 7/16" X 1 1/2"
SH607101	SCREW, SET, HEX HEAD, UNF, 7/16" X 1 1/4"
SH607091	SCREW, SET, HEX HEAD, UNF, 7/16" X 1 1/8"
SH607141	SCREW, SET, HEX HEAD, UNF, 7/16" X 1 3/4"
SH607111	SCREW, SET, HEX HEAD, UNF, 7/16" X 1 3/8"
SH607081	SCREW, SET, HEX HEAD, UNF, 7/16" X 1"
SH607181	SCREW, SET, HEX HEAD, UNF, 7/16" X 2 1/4"
SH607161	SCREW, SET, HEX HEAD, UNF, 7/16" X 2"
SH607061	SCREW, SET, HEX HEAD, UNF, 7/16" X 3/4"
SH607051	SCREW, SET, HEX HEAD, UNF, 7/16" X 5/8"
SH607071	SCREW, SET, HEX HEAD, UNF, 7/16" X 7/8"
ZCS610	SCREW, SET, HIGH TENSILE, UNC, 3/8" X 1 1/4"
ZCS508	SCREW, SET, HIGH TENSILE, UNC, 5/16" X 1"
ZCS505	SCREW, SET, HIGH TENSILE, UNC, 5/16" X 5/8"

ZCS507	SCREW, SET, HIGH TENSILE, UNC, 5/16" X 7/8"
18G8579B	SEALS 7/8" DIA SERVO
CHS2513	STUD, 5/16"x1-5/8", UNC/UNF
58688	STUD, UNC BOTH ENDS, 3/8" X 1 11/16"
115696	STUD, UNC BOTH ENDS, 3/8" X 1 13/16"
58917	STUD, UNC BOTH ENDS, 3/8" X 1 15/16"
101442	STUD, UNC BOTH ENDS, 3/8" X 1 5/8"
102474	STUD, UNC BOTH ENDS, 3/8" X 2 1/16"
107055	STUD, UNC BOTH ENDS, 3/8" X 2 3/8"
TE604101	STUD, UNF BOTH ENDS, 1/4" X 1 1/4"
TE604091	STUD, UNF BOTH ENDS, 1/4" X 1 1/8"
TE604081	STUD, UNF BOTH ENDS, 1/4" X 1"
TE606121	STUD, UNF BOTH ENDS, 3/8" X 1 1/2"
TE606101	STUD, UNF BOTH ENDS, 3/8" X 1 1/4"
TE606141	STUD, UNF BOTH ENDS, 3/8" X 1 3/4"
TE606111	STUD, UNF BOTH ENDS, 3/8" X 1 3/8"
TE606151	STUD, UNF BOTH ENDS, 3/8" X 1 7/8"
TE605121	STUD, UNF BOTH ENDS, 5/16" X 1 1/2"
TE605101	STUD, UNF BOTH ENDS, 5/16" X 1 1/4"
TE605141	STUD, UNF BOTH ENDS, 5/16" X 1 3/4"
TE605111	STUD, UNF BOTH ENDS, 5/16" X 1 3/8"
TE605131	STUD, UNF BOTH ENDS, 5/16" X 1 5/8"
TE605151	STUD, UNF BOTH ENDS, 5/16" X 1 7/8"
TE605201	STUD, UNF BOTH ENDS, 5/16" X 2 1/2"
TE605181	STUD, UNF BOTH ENDS, 5/16" X 2 1/4"
TE605221	STUD, UNF BOTH ENDS, 5/16" X 2 3/4"
TE605251	STUD, UNF BOTH ENDS, 5/16" X 3 1/8"
TE605291	STUD, UNF BOTH ENDS, 5/16" X 3 5/8"
TE504131	STUD, UNF ONE END UNC THE OTHER, 1/4" X 1 5/8"
TE504081	STUD, UNF ONE END UNC THE OTHER, 1/4" X 1"
TE506141	STUD, UNF ONE END UNC THE OTHER, 3/8" X 1 3/4"
TE506101	STUD, UNF ONE END UNC THE OTHER, 3/8" X 1 5/16"
TE506131	STUD, UNF ONE END UNC THE OTHER, 3/8" X 1 5/8"
TE506201	STUD, UNF ONE END UNC THE OTHER, 3/8" X 2 1/2"
TE506161	STUD, UNF ONE END UNC THE OTHER, 3/8" X 2"
TE506361	STUD, UNF ONE END UNC THE OTHER, 3/8" X 3 1/2"
TE505121	STUD, UNF ONE END UNC THE OTHER, 5/16" X 1 1/2"
TE505091	STUD, UNF ONE END UNC THE OTHER, 5/16" X 1 1/8"
TE505141	STUD, UNF ONE END UNC THE OTHER, 5/16" X 1 3/4"
TE505111	STUD, UNF ONE END UNC THE OTHER, 5/16" X 1 3/8"
TE505131	STUD, UNF ONE END UNC THE OTHER, 5/16" X 1 5/8"
TE505151	STUD, UNF ONE END UNC THE OTHER, 5/16" X 1 7/8"
TE505201	STUD, UNF ONE END UNC THE OTHER, 5/16" X 2 1/2"
TE505181	STUD, UNF ONE END UNC THE OTHER, 5/16" X 2 1/4"
TE505221	STUD, UNF ONE END UNC THE OTHER, 5/16" X 2 3/4"
TE505161	STUD, UNF ONE END UNC THE OTHER, 5/16" X 2"
TE505281	STUD, UNF ONE END UNC THE OTHER, 5/16" X 3 1/2"
TE505261	STUD, UNF ONE END UNC THE OTHER, 5/16" X 3 1/4"
TE505271	STUD, UNF ONE END UNC THE OTHER, 5/16" X 3 3/8"
TE505241	STUD, UNF ONE END UNC THE OTHER, 5/16" X 3"
TE505341	STUD, UNF ONE END UNC THE OTHER, 5/16" X 4 1/4"
1B3664	WASHER FIBRE 5/8"
6K431	WASHER, CRUSH, 3/4"
2K5291	WASHER, FELT 1/4"
6K690	WASHER, FELT 3/16"
2K5820	WASHER, FELT 3/8"
GHF314	WASHER, FLAT, LARGE 1/4 X 1" OD
PWP204	WASHER, FLAT, LARGE OD, CHROME, 1/4"
PWZ208	WASHER, FLAT, LARGE OD, ZINC, 1!

PWZ204	WASHER, FLAT, LARGE OD, ZINC, 1/4"
PWZ206	WASHER, FLAT, LARGE OD, ZINC, 3/8"
PWZ306	WASHER, FLAT, LARGE OD, ZINC, 3/8" X 1"
PWZ205	WASHER, FLAT, LARGE OD, ZINC, 5/16"
PWZ305	WASHER, FLAT, LARGE OD, ZINC, 5/16" X 7/8"
PWZ207	WASHER, FLAT, LARGE OD, ZINC, 7/16"
PWZ307	WASHER, FLAT, LARGE OD, ZINC, 7/16" X 1 1/8"
PWZ203	WASHER, FLAT, LARGE OD, ZINC, NO.10
PWZ202	WASHER, FLAT, LARGE OD, ZINC, NO.6
GHF316	WASHER, FLAT, LARGE, 3/8 X 1-3/8" OD
GHF315	WASHER, FLAT, LARGE, 5/16 X 1-1/4" OD
PWN106	WASHER, FLAT, STANDARD, PLAIN, 3/8"
PWN105	WASHER, FLAT, STANDARD, PLAIN, 5/16"
PWZ108	WASHER, FLAT, STANDARD, ZINC, 1"
PWZ104	WASHER, FLAT, STANDARD, ZINC, 1/4"
PWZ106	WASHER, FLAT, STANDARD, ZINC, 3/8"
PWZ105	WASHER, FLAT, STANDARD, ZINC, 5/16"
PWZ107	WASHER, FLAT, STANDARD, ZINC, 7/16"
PWZ103	WASHER, FLAT, STANDARD, ZINC, NO.10
PWZ102	WASHER, FLAT, STANDARD, ZINC, NO.6
AEC340	WASHER, LOCKTAB, 1/4" (LOCKS TWO BOLTS)
ACA5521	WASHER, PLAIN, 1/2"
WP120	WASHER, PLAIN, REPAIR, 1/4"
WP5	WASHER, PLAIN, REPAIR, 3/16"
WP130	WASHER, PLAIN, REPAIR, 3/8"
WP105	WASHER, PLAIN, REPAIR, 5/16"
PWZ110	WASHER, PLAIN, REPAIR, 5/8"
WM69	WASHER, PLAIN, REPAIR, 7/16"
WP12	WASHER, PLAIN, REPAIR, 9/16"
WP3	WASHER, PLAIN, REPAIR, NO.6
WP4	WASHER, PLAIN, REPAIR, NO.8
GHF304	WASHER, PLAIN, STANDARD, 1/2"
GHF300	WASHER, PLAIN, STANDARD, 1/4"
GHF306	WASHER, PLAIN, STANDARD, 3/16"
GHF302	WASHER, PLAIN, STANDARD, 3/8"
GHF301	WASHER, PLAIN, STANDARD, 5/16"
GHF303	WASHER, PLAIN, STANDARD, 7/16"
GHF365	WASHER, SEALING, COPPER, 1/2"
GHF361	WASHER, SEALING, COPPER, 1/4"
GHF363	WASHER, SEALING, COPPER, 3/8"
GHF362	WASHER, SEALING, COPPER, 5/16"
GHF364	WASHER, SEALING, COPPER, 7/16"
GHF346	WASHER, SEALING, FIBRE, 1/2"
GHF342	WASHER, SEALING, FIBRE, 1/4"
WF505	WASHER, SEALING, FIBRE, 3/16"
GHF344	WASHER, SEALING, FIBRE, 3/8"
GHF343	WASHER, SEALING, FIBRE, 5/16"
GHF348	WASHER, SEALING, FIBRE, 5/8"
GHF345	WASHER, SEALING, FIBRE, 7/16"
GHF347	WASHER, SEALING, FIBRE, 9/16"
WE600081	WASHER, SHAKEPROOF, EXTERNAL STAR, 1/2"
WE600041	WASHER, SHAKEPROOF, EXTERNAL STAR, 1/4"
WE702101	WASHER, SHAKEPROOF, EXTERNAL STAR, 3/16"
WE600061	WASHER, SHAKEPROOF, EXTERNAL STAR, 3/8"
WE600051	WASHER, SHAKEPROOF, EXTERNAL STAR, 5/16"
WE600101	WASHER, SHAKEPROOF, EXTERNAL STAR, 5/8"
WE600071	WASHER, SHAKEPROOF, EXTERNAL STAR, 7/16"
WE704061	WASHER, SHAKEPROOF, EXTERNAL STAR, No. 6
LWZ505	WASHER, SHAKEPROOF, EXTERNAL TEETH, ZINC, 5/16"

LWZ510	WASHER, SHAKEPROOF, EXTERNAL TEETH, ZINC, 5/8"
GHF325	WASHER, SHAKEPROOF, INTERNAL STAR, 1/2"
WF600081	WASHER, SHAKEPROOF, INTERNAL STAR, 1/2"
GHF321	WASHER, SHAKEPROOF, INTERNAL STAR, 1/4"
WF600041	WASHER, SHAKEPROOF, INTERNAL STAR, 1/4"
GHF320	WASHER, SHAKEPROOF, INTERNAL STAR, 3/16"
WF702101	WASHER, SHAKEPROOF, INTERNAL STAR, 3/16"
GHF323	WASHER, SHAKEPROOF, INTERNAL STAR, 3/8"
WF600061	WASHER, SHAKEPROOF, INTERNAL STAR, 3/8"
GHF322	WASHER, SHAKEPROOF, INTERNAL STAR, 5/16"
WF600051	WASHER, SHAKEPROOF, INTERNAL STAR, 5/16"
GHF326	WASHER, SHAKEPROOF, INTERNAL STAR, 5/8"
WF600101	WASHER, SHAKEPROOF, INTERNAL STAR, 5/8"
GHF324	WASHER, SHAKEPROOF, INTERNAL STAR, 7/16"
WF600071	WASHER, SHAKEPROOF, INTERNAL STAR, 7/16"
WF600091	WASHER, SHAKEPROOF, INTERNAL STAR, 9/16"
WF704061	WASHER, SHAKEPROOF, INTERNAL STAR, No. 6
LWN404	WASHER, SHAKEPROOF, INTERNAL TEETH, PLAIN, 1/4"
LWN405	WASHER, SHAKEPROOF, INTERNAL TEETH, PLAIN, 5/16"
LWZ408	WASHER, SHAKEPROOF, INTERNAL TEETH, ZINC, 1/2"
LWZ404	WASHER, SHAKEPROOF, INTERNAL TEETH, ZINC, 1/4"
LWZ405	WASHER, SHAKEPROOF, INTERNAL TEETH, ZINC, 5/16"
LWZ607	WASHER, SHAKEPROOF, INTERNAL TEETH, ZINC, 7/16"
LWZ403	WASHER, SHAKEPROOF, INTERNAL TEETH, ZINC, NO.10
LWZ402	WASHER, SHAKEPROOF, INTERNAL TEETH, ZINC, NO.6
GHF330	WASHER, SPRING, 3/16"
AJD7722	WASHER, SPRING, DOUBLE COIL, 1/4"
AJD7721	WASHER, SPRING, DOUBLE COIL, 3/16"
AJD7742	WASHER, SPRING, DOUBLE COIL, 3/8"
AJD7731	WASHER, SPRING, DOUBLE COIL, 5/16"
LWN304	WASHER, SPRING, HEAVY, PLAIN, 1/4"
LWN306	WASHER, SPRING, HEAVY, PLAIN, 3/8"
LWN305	WASHER, SPRING, HEAVY, PLAIN, 5/16"
LWN307	WASHER, SPRING, HEAVY, PLAIN, 7/16"
LWZ308	WASHER, SPRING, HEAVY, ZINC, 1/2"
LWZ304	WASHER, SPRING, HEAVY, ZINC, 1/4"
LWZ306	WASHER, SPRING, HEAVY, ZINC, 3/8"
LWZ305	WASHER, SPRING, HEAVY, ZINC, 5/16"
LWZ307	WASHER, SPRING, HEAVY, ZINC, 7/16"
LWZ303	WASHER, SPRING, HEAVY, ZINC, NO.10
LWN204	WASHER, SPRING, MEDIUM, PLAIN, 1/4"
LWN206	WASHER, SPRING, MEDIUM, PLAIN, 3/8"
LWN205	WASHER, SPRING, MEDIUM, PLAIN, 5/16"
LWZ208	WASHER, SPRING, MEDIUM, ZINC, 1/2"
LWZ204	WASHER, SPRING, MEDIUM, ZINC, 1/4"
LWZ212	WASHER, SPRING, MEDIUM, ZINC, 3/4"
LWZ206	WASHER, SPRING, MEDIUM, ZINC, 3/8"
LWZ205	WASHER, SPRING, MEDIUM, ZINC, 5/16"
LWZ207	WASHER, SPRING, MEDIUM, ZINC, 7/16"
LWZ203	WASHER, SPRING, MEDIUM, ZINC, NO.10
LWZ202	WASHER, SPRING, MEDIUM, ZINC, NO.6
GHF335	WASHER, SPRING, SINGLE COIL, 1/2"
GHF331	WASHER, SPRING, SINGLE COIL, 1/4"
WL700101	WASHER, SPRING, SINGLE COIL, 3/16"
GHF333	WASHER, SPRING, SINGLE COIL, 3/8"
GHF332	WASHER, SPRING, SINGLE COIL, 5/16"
GHF336	WASHER, SPRING, SINGLE COIL, 5/8"
GHF334	WASHER, SPRING, SINGLE COIL, 7/16"
WL700061	WASHER, SPRING, SINGLE COIL, No.6

WL700081	WASHER, SPRING, SINGLE COIL, No.8
----------	-----------------------------------

ENGINE (4-cyl)		FtLb	KgM	NM
Air-pump mounting screws	if fitted	18	2.5	24
Big-end bolts	early	35 to 40	4.8 to 5.5	48 to 54
Big-end bolts oiled thread	12-sided	33	4.5	45
Camshaft nut	All models	60 to 70	8.3 to 9.68	81 to 95
Carburettor stud nuts	18G/18GA	2	0.28	3
Carburettor stud nuts	All models	15	2.1	20
Clutch to flywheel	All models	25 to 30	3.4 to 4.1	34 to 41
Crankshaft pulley bolt	All models	70	9.6	95
Cylinder head nuts	18G/18GA	45 to 50	6.2 to 6.9	61 to 68
Cylinder side cover screws	18G/18GA	2	0.28	3
Cylinder side cover screws deep cover	18G/18GA	5	0.7	7
Distributor clamp bolt (bolt trapped)	18G/18GA	2 to 2.5	0.3 to 0.35	3 to 4
Distributor clamp bolt (nut trapped)	18G/18GA	4.16	0.57	5
Fan blade fixing screws	18G/18GA	7.3 to 9.3	1.0 to 1.3	9 to 12
Flywheel set screws	18G/18GA	40	5.5	54
Front plate 5/16 inch screws	All models	20	2.8	27
Gudgeon pin clamp bolts	18G/18GA	25	3.4	34
Main bearing nuts	All models	70	9.7	95
Manifold nuts	All models	15 to 16	2.1 to 2.2	20 to 22
Oil filter centre bolt	18G/18GA	15	2.1	20
Oil pipe banjo	All models	37 max	5.1 max	50 max
Oil pressure relief valve domed nut	Pre-78	43	5.9	58
Oil pressure relief valve domed nut	78-on	40	5.5	54
Oil pump to crankcase	All models	14	1.9	19
Rear engine mounting bolt	All models	38 to 40	5.22 to 5.53	52 to 54
Rear plate 3/8 inch screws	All models	30	4.1	41
Rear plate 5/16 inch screws	All models	20	2.8	27
Rocker bracket nuts	All models	25	3.4	34
Rocker cover nuts	18G/18GA	4	0.56	5
Spark plugs	All models	18	2.5	24
Sump to crankcase	All models	6	0.8	8
Timing cover 1/4 inch screws	18G/18GA	6	0.8	8
Timing cover 5/16 inch screws	18G/18GA	14	1.9	19
Water outlet elbow nuts	18G/18GA	8	1.1	11
Water pump to crankcase	18G/GA	17	2.4	23
Water pump to crankcase	Later models	25	3.5	34
Note that the WSM quotes 17ftlb for 18G and GA i.e. early cars whereas Haynes quotes early models as 25 ft lb and late models as 17 ft lb i.e. the other way round.				

ENGINE (Factory V8)		FtLb	KgM	NM
Carburettor adapter nuts		18	2.49	24
Connecting rod cap nuts		33	4.56	45
Crankshaft pulley bolt		150	20.73	203
Cylinder head bolts		68	9.4	92
Distributor drive gear to camshaft bolt		43	5.94	58
Exhaust manifold bolts		13	1.8	18
Flywheel bolts		55	7.6	75
Induction manifold bolts		28	3.87	38
Induction manifold gasket clamp bolt		13	1.8	18
Main bearing cap bolts: Nos. 1 to 4		53	7.32	72
Rear		68	9.4	92
Oil pressure relief valve plug		33	4.56	45
Oil pump cover bolts		13	1.8	18
WARNING! I got mine up to about 10 and they didn't seem to want to go higher. Bearing in mind they are going into the alloy front cover I stopped. If you look				

at the 'Other V8' figures there are two - 9ftlb and for Suffix B 3ftlb. 3 seems a bit low for oil under pressure even with Loctite, but 9 is definitely safer than 13.				
Rocker shaft to cylinder head bolts		28	3.87	38
Timing chain cover bolts		23	3.18	31
Water pump bolts: 1/4 U.N.C.		7	0.97	9
5/16 U.N.C.		17	2.35	23

ENGINE (Other V8)		FtLb	KgM	NM
Camshaft gear bolt		37	5.12	50
Camshaft thrust plate bolts - If fitted		18	2.49	25
Connecting rod nuts:		37	5.12	50
Connecting rod bolts: Stage 1		15	2.07	20
Connecting rod bolts: Stage 2 Further 80 °				
Coolant pump/timing cover to cylinder block		16	2.21	22
Crankshaft pulley bolt		200	28	270
Cylinder head bolts - Engine numbers with suffix B: + */**** Stage 1		15	2.07	20
Stage 2 Further 90 °				
Stage 3 Further 90 °				
Cylinder head bolts - Engine numbers without suffix B: + * Bolts 11 to 14 - Outer row		44	6.09	60
Bolts 2, 4, 6, 8 and 10 - Centre row		66	9.13	90
Bolts 1, 3, 5, 7 and 9 - Inner row		66	9.13	90
Distributor clamp nut		15	2.07	20
Drive plate and clamp ring bolts		33	4.56	45
Drive plate hub aligner Allen bolts		63	8.71	85
Flywheel bolts		58	8.02	78
Lifting eye to cylinder head bolts		30	4.15	40
Main bearing cap bolts + * Initial torque - all bolts:		10	1.38	14
Final torque: Numbers 1 to 4 main bearing cap bolts:		52	7.19	70
Final torque: Rear main bearing cap bolts:		66	9.13	90
Oil pick-up pipe bolts		8	1.11	10
Oil pressure relief valve plug - Engine numbers without suffix B		33	4.56	45
Oil pressure switch		11	1.52	15
Oil pump cover plate bolt - if fitted **		6	0.83	8
Oil pump cover plate screws - Engine numbers with suffix B **		3	0.41	4
Oil pump cover to timing cover - Engine numbers without suffix B		9	1.24	12

		FtLb	KgM	NM
Oil strainer bolts		7	0.97	10
Oil strainer nut - Engine numbers with suffix B		16	2.21	22
Oil sump bolts +		17	2.35	23
Oil sump drain plug		33	4.56	45
Rocker cover bolts: + **** Stage 1		2.5	0.35	3
Stage 2		6	0.83	8
Rocker shaft to cylinder head bolts		28	3.87	38
Secondary air injection adapters - If fitted ***		24	3.32	33
Spark plug		15	2.07	20
Timing cover to cylinder block bolts **		16	2.21	22
* Lightly oil threads prior to assembly.				
** Coat threads with sealant Part number STC 50552 prior to assembly.				
*** New adapters must be fitted				
**** New bolts must be fitted				

GEARBOX		FtLb	KgM	NM
Gearbox remote control cover to tunnel	3-synch	7.5 to 9.5	1.1 to 1.3	11 to 13

Drive flange nut overdrive	Type D	100 to 130	13.8 to 18.0	136 to 176
Drive flange nut overdrive	Type LH	55 to 60	7.6 to 8.3	75 to 81
Drive flange nut without overdrive	manual	150	20.7	203
Mounting to gearbox case	manual	15 to 20	2.1 to 2.8	20 to 27
Cam bracket screws	automatic	20 to 40	2.77 to 5.53	27 to 54
Centre support bolts	automatic	10 to 18	1.38 to 2.49	14 to 24
Converter to drive plate bolts	automatic	25 to 30	3.46 to 4.15	34 to 41
Downshift cable adaptor bolts	automatic	8 to 9	1.11 to 1.24	11 to 12
Drain plug	automatic	8 to 10	1.11 to 1.38	11 to 14
Drive flange nut	automatic	55 to 60	7.6 to 8.3	75 to 81
Driving flange nut	automatic	55 to 60	7.6 to 8.3	75 to 81
Extension housing to transmission case	automatic	8 to 13	1.1 to 1.8	11 to 18
Filler tube connector sleeve to transmission case	automatic	20 to 30	2.77 to 4.15	27 to 41
Filler tube to connector sleeve nut	automatic	17 to 18	2.35 to 2.49	23 to 24
Front brake band adj. screw locknut	automatic	15 to 20	2.1 to 2.8	20 to 27
Front servo adjusting screw locknut	automatic	15 to 20	2.07 to 2.77	20 to 27
Front servo bolts	automatic	8 to 13	1.11 to 1.80	11 to 18
Governor to counterweight screws	automatic	4 to 5	0.55 to 0.69	5 to 74
Governor to cover plate screws	automatic	20 to 48	2.77 to 6.64	27 to 65
Lower valve body to upper valve body scr	automatic	20 to 30	2.77 to 4.15	27 to 41
Manual shaft locknut	automatic	7 to 9	0.97 to 1.24	9 to 12
Oil pan to gearbox	automatic	8 to 13	1.1 to 1.8	11 to 18
Oil tube and end plate to valve body	automatic	20 to 30	2.77 to 4.15	27 to 41
Pressure adaptor plug	automatic	4 to 5	0.55 to 0.69	5 to 7
Pump adaptor to housing bolts	automatic	17 to 32	2.35 to 4.43	23 to 43
Pump adaptor to housing screw	automatic	2 to 3	0.28 to 0.41	3 to 4
Pump adaptor to transmission case	automatic	8 to 18.5	1.11 to 2.56	11 to 24
Rear brake band adj. screw locknut	automatic	25 to 30	3.46 to 4.15	34 to 41
Rear servo adjusting screw locknut	automatic	25 to 30	3.46 to 4.15	34 to 41
Rear servo bolts	automatic	13 to 27	1.80 to 3.73	18 to 37
Starter inhibitor switch locknut	automatic	4 to 6	0.55 to 0.83	5 to 8
Stone guard screws	automatic	17 to 19	2.35 to 2.63	23 to 26
Transmission case to converter housing	automatic	8 to 13	1.11 to 1.80	11 to 18
Upper valve body to lower valve body scr	automatic	20 to 30	2.77 to 4.15	27 to 41
Valve bodies to transmission case bolts	automatic	5 to 9	0.69 to 1.24	7 to 12

PROP-SHAFT		FtLb	KgM	NM
Flange nuts	All models	30 to 35	4.1 to 4.8	41 to 47
REAR AXLE		FtLb	KgM	NM
Axle shaft nut	Salisbury	150	20.7	203
Bearing retaining nut Then align to next hole	Banjo	180	24.9	244
Crown wheel bolts	Salisbury	60 to 65	8.3 to 9.0	81 to 88
	Factory V8	63	8.7	85
Crown wheel to differential carrier	Banjo	55 to 60	7.6 to 8.3	75 to 81
Differential bearing cap bolts	Salisbury	50 to 55	6.9 to 7.6	68 to 75
Differential bearing cap bolts	Banjo	60 to 65	8.3 to 9.0	81 to 88
	Factory V8	53	7.3	72
Half-shaft nut	Salisbury	150	20.7	203
Pinion bearing nut	Banjo	135 to 140	18.7 to 19.4	183 to 190
Pinion nut new spacer only		180 to 220	24.9 to 30.4	244 to 298
Pinion nut oil seal change	Mark nut, shaft and flange positions, refit and tighten to the same point			
FRONT SUSPENSION		FtLb	KgM	NM
Anti roll bar link	All models	60	8.3	81
Bearing retaining nut stage 1	All models	40 to 70	5.5 to 9.7	54 to 95
stage 2	Tighten to next split-pin hole			
Bottom wishbone pivot to cross-member nut	Factory V8	45	6.22	61
Cross member to body	4-cyl	54 to 56	7.5 to 7.7	73 to 76

Cross member to side member nut: Top	Factory V8	55	7.61	75
Bottom	Factory V8	45	6.22	61
Front shock absorber bolts	All models	43 to 45	5.9 to 6.2	58 to 61
King pin to damper - upper fulcrum		40	5.5	54
King pin to wishbone - lower fulcrum		45	6.2	61
King pin trunnion (nut on top of king pin)		60	8.3	81
Shock absorber pinch bolt	All models	28	3.9	38
Spring pan nuts and screws	All models	22	3.0	30
Stiff nut to crossmember mounting bolt	Mk2	44 to 46	6.1 to 6.4	60 to 62
Wishbone cross bolt	All models	28	3.9	38

STEERING		FtLb	KgM	NM
Column clamp bolt Note this is given in the manual as "85 lbf inches"	Factory V8	7	0.97	9
Road wheel nuts	4-cyl	60 to 65	8.3 to 9.0	81 to 88
Road wheel nuts	Factory V8	60	8.3	81
Steering arm bolts	All models	60 to 65	8.3 to 9.0	81 to 88
Steering column top fixing bolts	All models	12 to 17	1.66 to 2.35	16 to 23
Steering column universal joint bolts	All models	20 to 22	2.77 to 3.04	27 to 30
Steering lever balljoint nut	All models	34 to 35	4.7 to 4.8	46 to 47
Steering rack and pinion bearing nut	All models	40	5.5	54
Steering rack fixings		30	4.1	41
Steering tie-rod lock nut	All models	33 to 38	4.56 to 5.26	45 to 52
Steering wheel nut		36 to 38	4.98 to 5.26	49 to 52
Steering wheel nut 11/16 in. UNF		41 to 43	5.67 to 5.95	56 to 58
Steering wheel nut 9/16 in. UNF		27 to 29	3.73 to 4.01	37 to 39
Steering wheel nut	Factory V8	28	3.87	38
Swivel pin nut stage 1	All models	60	8.3	81
stage 2	Tighten to next split-pin hole			

BRAKES		FtLb	KgM	NM
Brake caliper clamping bolts Spotted by Ed Woods in the main body of the manual: "Only split the caliper if it is unavoidable, then replace the fluid channel seal, bolts and lock plates. Only bolts supplied by BMC Service Ltd. may be used"	All models	35.5 to 37	4.8 to 5.1	48 to 50
Brake caliper securing bolts	All models	40 to 45	5.5 to 6.2	54 to 61
Brake disc to hub	All models	40 to 45	5.5 to 6.2	54 to 61
Brake front servo bolts	All models	8 to 13	1.1 to 1.8	11 to 18
Brake pressure failure switch (nylon) Note given as 15 lb in in the WSM		1.25	0.173	1.69
Brake pressure failure switch end plug Note given as 200 lb in in the WSM	All models	17	5.5	27
Brake rear servo bolts	All models	13 to 27	1.8 to 3.7	18 to 37
Brake stone guard screws	All models	17 to 19	5.5 to 2.6	23 to 26
Hydraulic brake pipe connect 7/16 UNF		7 to 10	5.5 to 1.4	9 to 14
Hydraulic brake pipe connection 3/8 UNF		5 to 7	5.5 to 1.0	7 to 9
Master cylinder port adaptors	RB	33	5.5 to 4.6	45 to 45
Master cylinder reservoir fixing bolts	All models	5	5.5	7
Rear brake adjuster fixing nuts	All models	5 to 7	0.69 to 0.97	7 to 9

REAR SUSPENSION		FtLb	KgM	NM
Rear shock absorber bolts	4-Cyl	55 to 60	7.6 to 8.3	75 to 81
Shock absorber to side-member nut	Factory V8	58	8.0	78.6
GENERAL		FtLb	KgM	NM
Alternator mounting bolt	All models	20	2.8	27
Alternator pulley nut	All models	25	3.5	34
Alternator shaft nut	All models	25 to 30	3.5 to 4.1	34 to 41
Interior mirror special screw	All models	0.42	0.058	0.57

Note given as 5 lb in in the WSM				
Starter motor mounting bolts	All models	30	4.1	41

Decals

Images from Motaclan/Leacy except where stated.



Roadster hood header rail



Speedo - could be black, red or green. However on my 73 and 75 the knob points downwards behind the dash so 'clockwise' is a matter of interpretation, and doesn't need to be pushed, just turned. It seems that some North American (at least) types do have to be pushed up then turned to have the desired effect. It seems that their late-model speedos (79-80?) had a push-button reset on the face.



Air filter cans up to 1969



Air filter cans 1970 to 1976



Air filter cans 1977-on ([Miniphernalia](#))



Heater case, facing forwards, between ports



Heater motor, top



Rocker cover - carb side, black screen-printed plate to 65, sticker as here 66 to 72



Rocker cover - plug side, plate up to 66, sticker 67 to 72 ([Moss Europe](#))



Rocker cover - 18V engines to 1979



Container for replaceable oil filter element



Round washer bottle



SU fuel pump



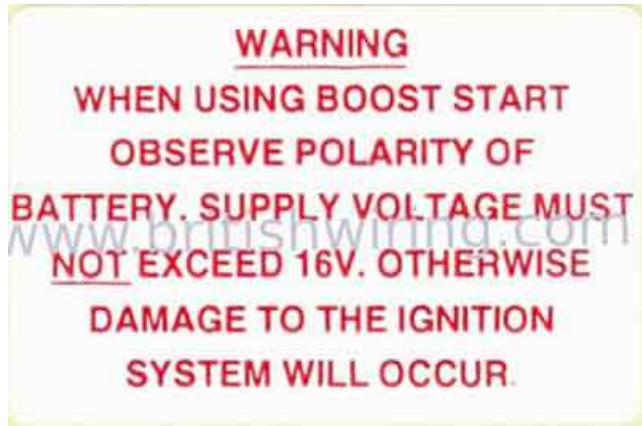
Bonnet slam-panel, Mk2 on chrome bumper?



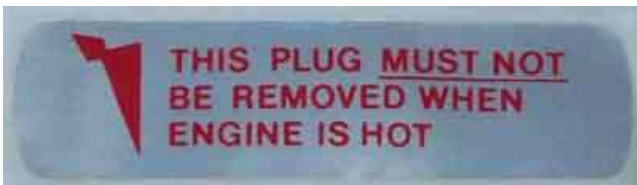
1970 on chrome bumper?



Rubber bumper replacing the previous two?

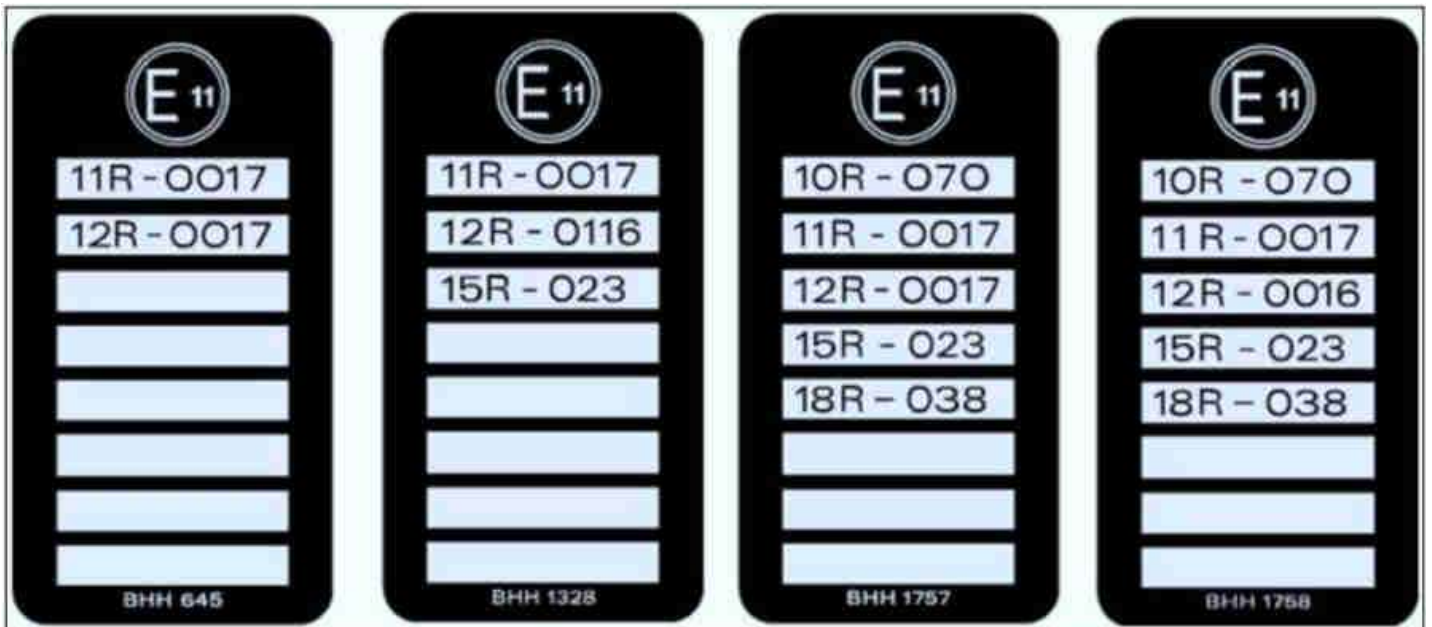


Clausager shows this label on the battery cover of a 1980 roadster. Apparently a UK car, I could expect it on a North American model with factory electronic ignition, less so an RHD model with points. ([British Wiring](#))



V8 radiator

November 2023: Four examples of EU conformity stickers used from when the UK joined the EU in 1973: ([V8 Register](#)).



Not exhaustive, found as a result of a query on the MGOC forum from someone who had one showing a part number of BHH2008 and a different set of code numbers and was asking what it meant. Not listed in the Parts Catalogue, and only paper so most were 'lost' years ago.

There are very many more for North American spec, mainly concerned with their emissions and car ID requirements.

© Copyright 1999 to 2023 I.T. Answers.
<http://www.mgb-stuff.org.uk/>